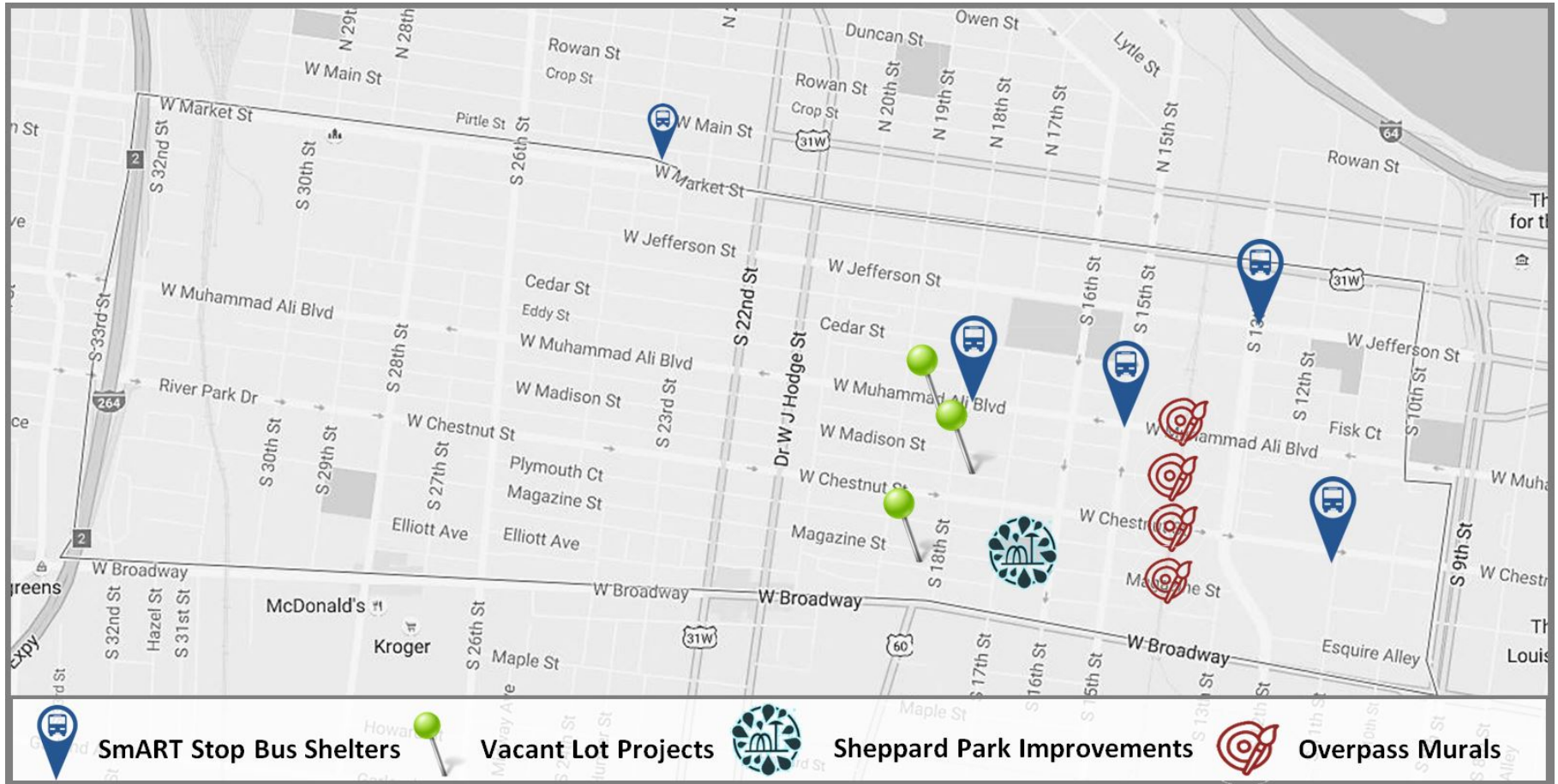




Choice Neighborhoods Initiative
Action Activity Update
July 16, 2018

Final Action Activity Project Locations



LMHA

Advanced Planning

Redevelopment Strategies

13 Strategic Locations

\$1.3 Million Placemaking Investment

4 Project Managers

- Kathleen O'Neil, LMHA
- Sarah Lindgren, Public Art
- Jason Canuel, Metro Parks
- Christopher Fitzgerald, VPPA

13th and Jefferson

smart design[®]
Lockett & Farley



18th and Muhammad Ali

11th & chestnut

vbn a
architects





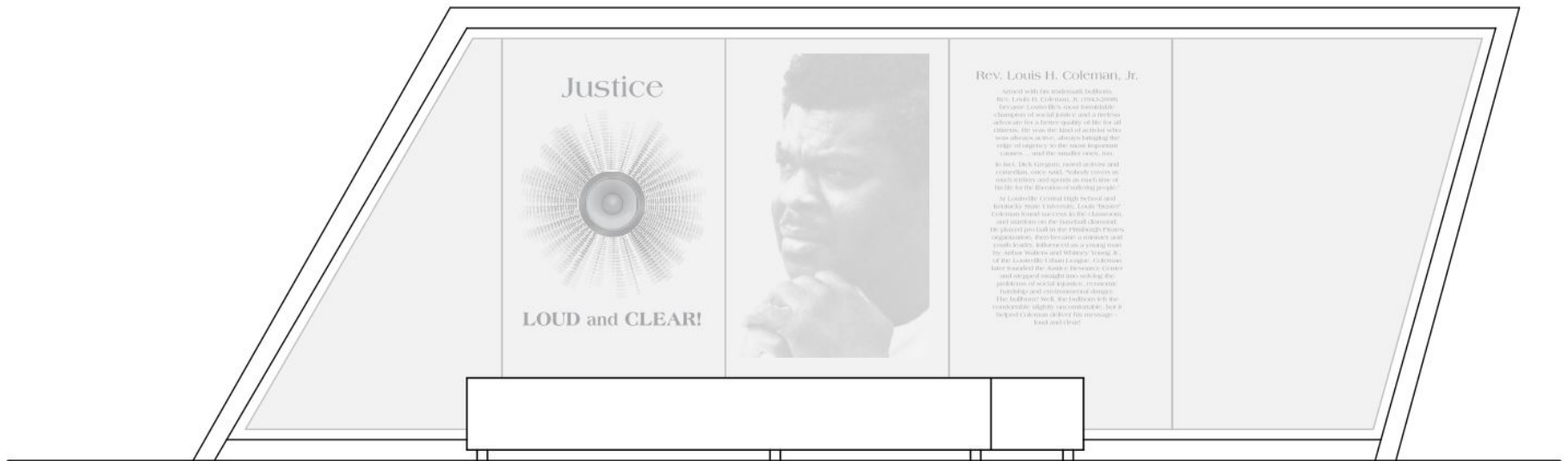
23rd & market

vbn a
architects



15th & Muhammad Ali

HDDS
inc.
DESIGN • BUILD • INNOVATE



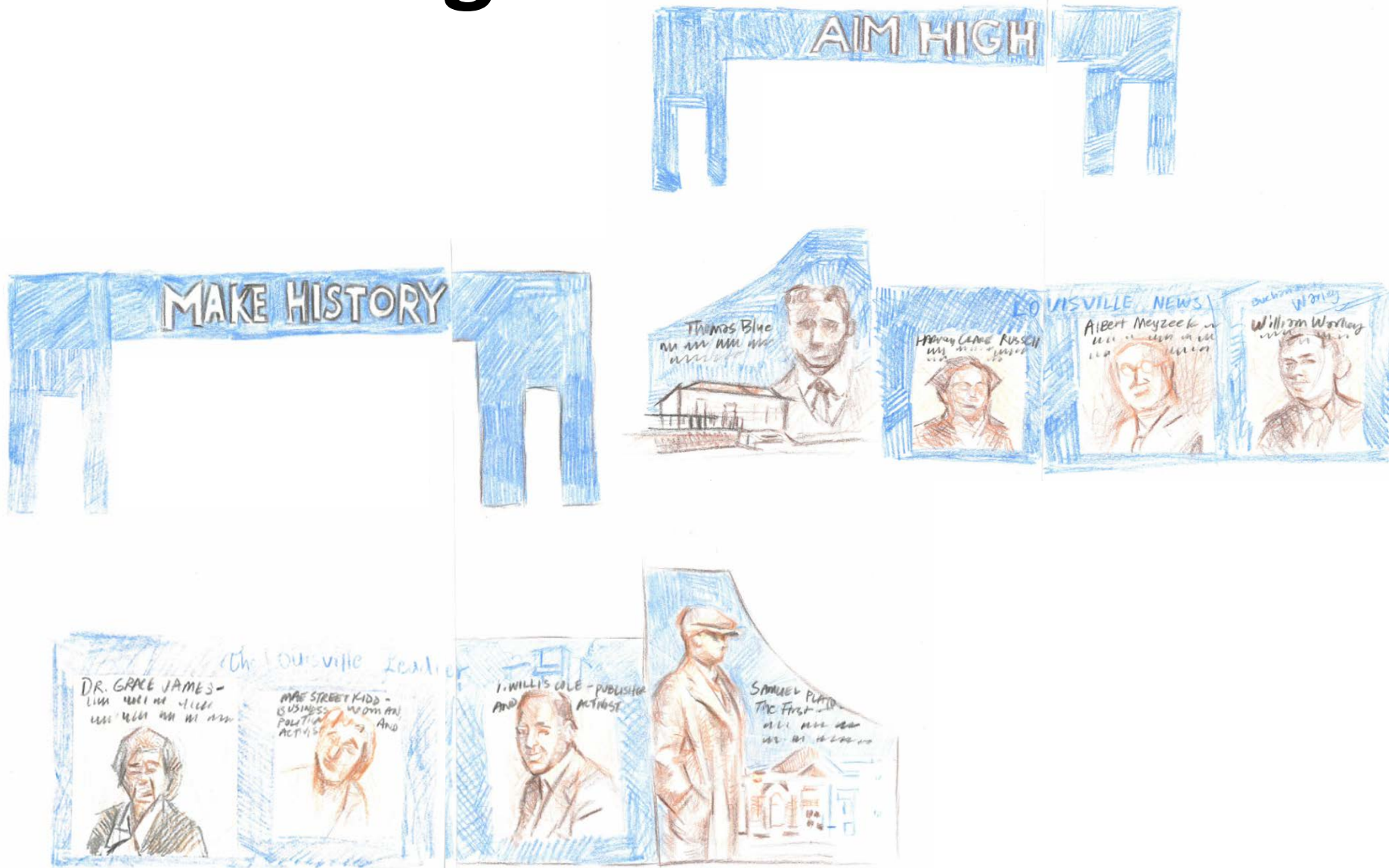
VIA Studio

Madison Street



Victor Sweatt

Magazine Street



Often Seen Rarely Spoken

Chestnut Street



Muhammad Ali Boulevard



Front Overpass

RUSSELL STRONG

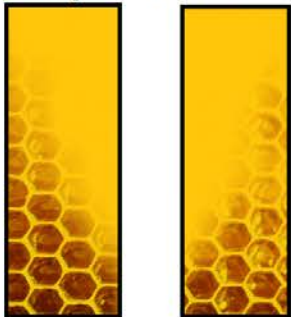
Back Overpass

DREAM BIG



Left Side / Under Overpass

Overpass Towers / 4x



Left Side / Small Wall Section



Right Side / Under Overpass

**Sheppard Park Improvements feature a new
sprayground, Conga drums, restrooms and
upgraded park facilities. Completed in May, 2018.**



Vacant Lot Project at 510 S. 18th St. “The Lily Pad”



Project Partner:
Pamela Haines, Sweet Peaches

Vacant Lot Project at 634 & 636 S. 18th St.

“Opportunity Corner”

THE CONCEPT



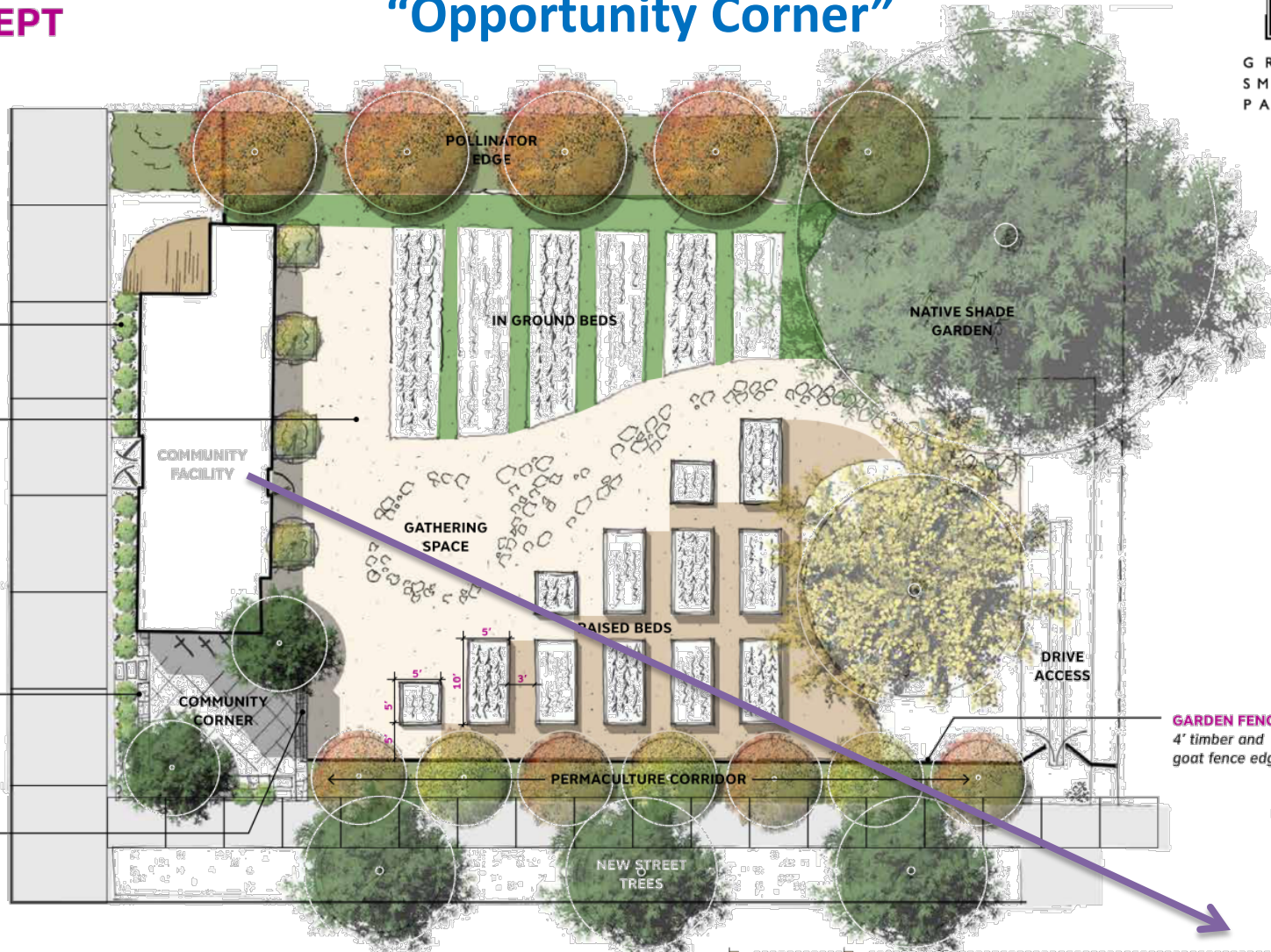
GRESHAM
SMITH AND
PARTNERS

GRASS EDGE
18" perennial edge

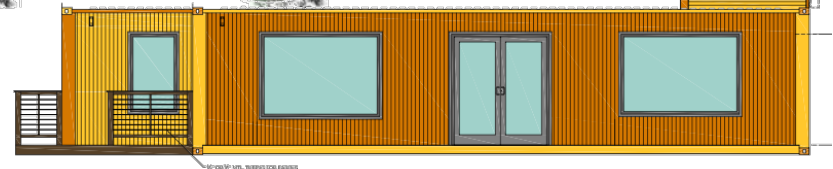
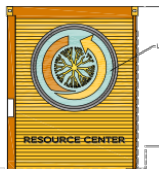
SURFACE MATERIAL
Mixture of crushed
stone, wood chips and
turf to suit budget

GABION SEAT WALL
Seat wall to frame
community corner,
bike parking and
direct gateway to
garden

GATEWAY
Garden specific
entrance feature



GARDEN FENCE
4' timber and
goat fence edge



Project Partner:
Canann Community Development Corporation & Louisville Grows