

SECTION 106 CONSULTING PARTIES MEETING

JUNE 6, 2019

FACILITATOR –

CYNTHIA ELMORE, LOUISVILLE METRO GOVERNMENT

PRESENTERS –

GRETCHEN MILLIKEN, LOUISVILLE METRO GOVERNMENT

LAURA KINSELL-BAER, MCCORMACK, BARON, SALAZAR

NATALIE WOODS, LOUISVILLE FREE PUBLIC LIBRARY

LAVEL D. WHITE, BLU BOI PRODUCTIONS

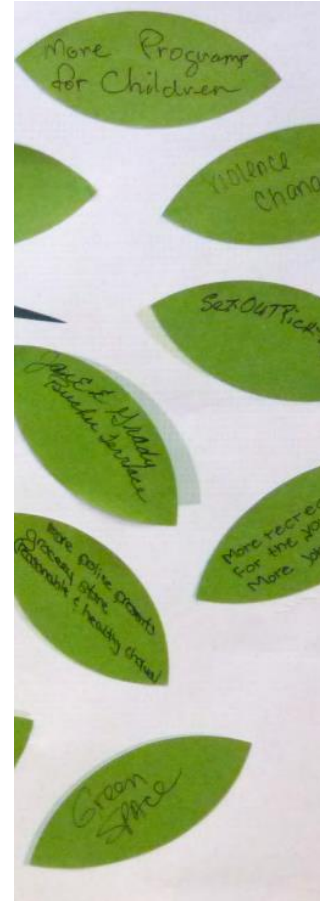
DARCY THOMPSON, LOUISVILLE STORY PROGRAM

ANNE BADER, CORN ISLAND ARCHAEOLOGY

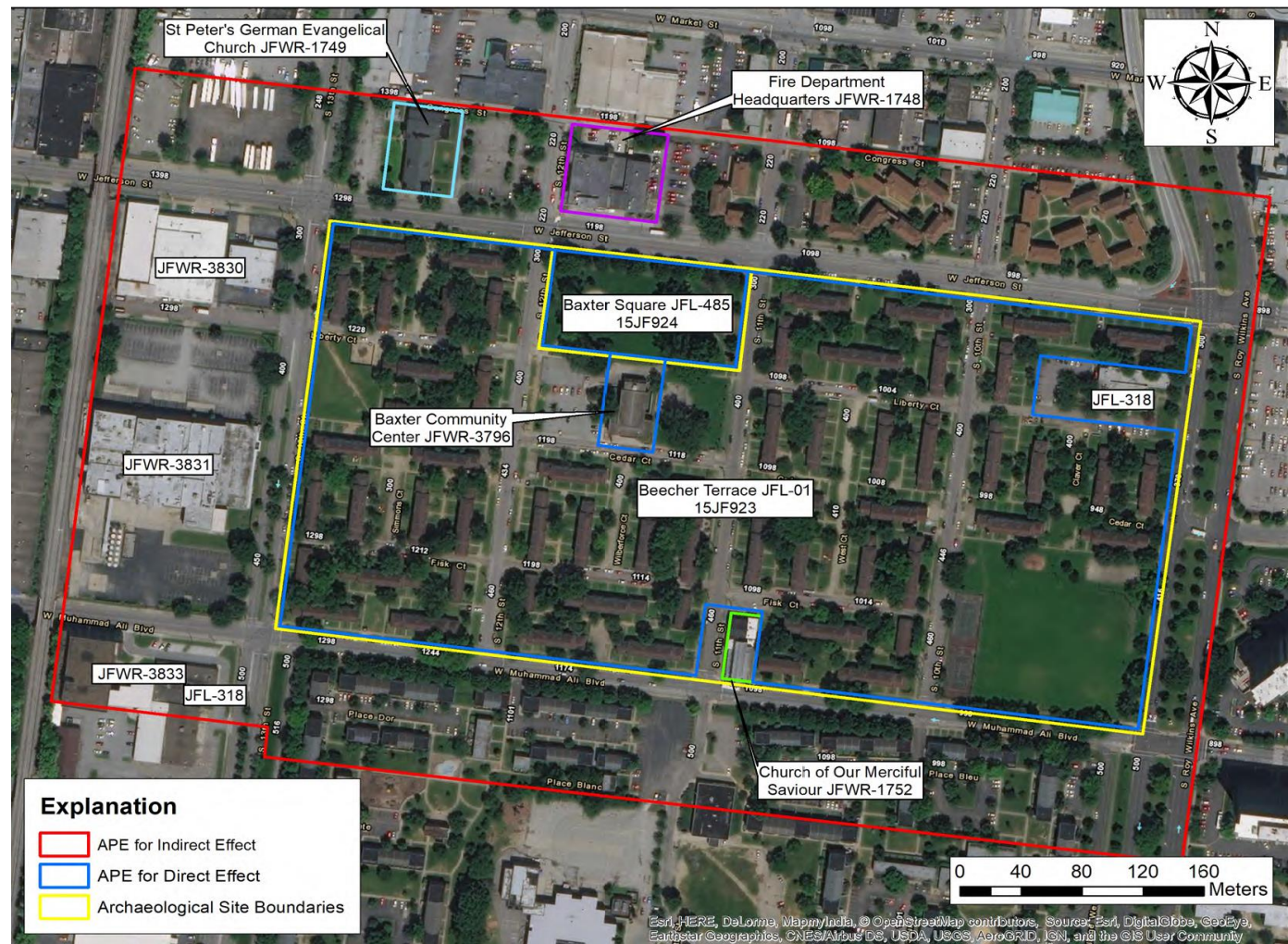
KATHLEEN O'NEIL, LOUISVILLE METRO HOUSING AUTHORITY

Vision Russell Project Overview

- **People**
- **Housing**
- **Education**
- **Neighborhood**



Area of Potential Effect



Beecher Terrace Historic District



Public Residential Units



Baxter Community Center

Project Time Line

Stage I

Section 106 Compliance Phase 1 - 3

Demolition Phase 1 - 3

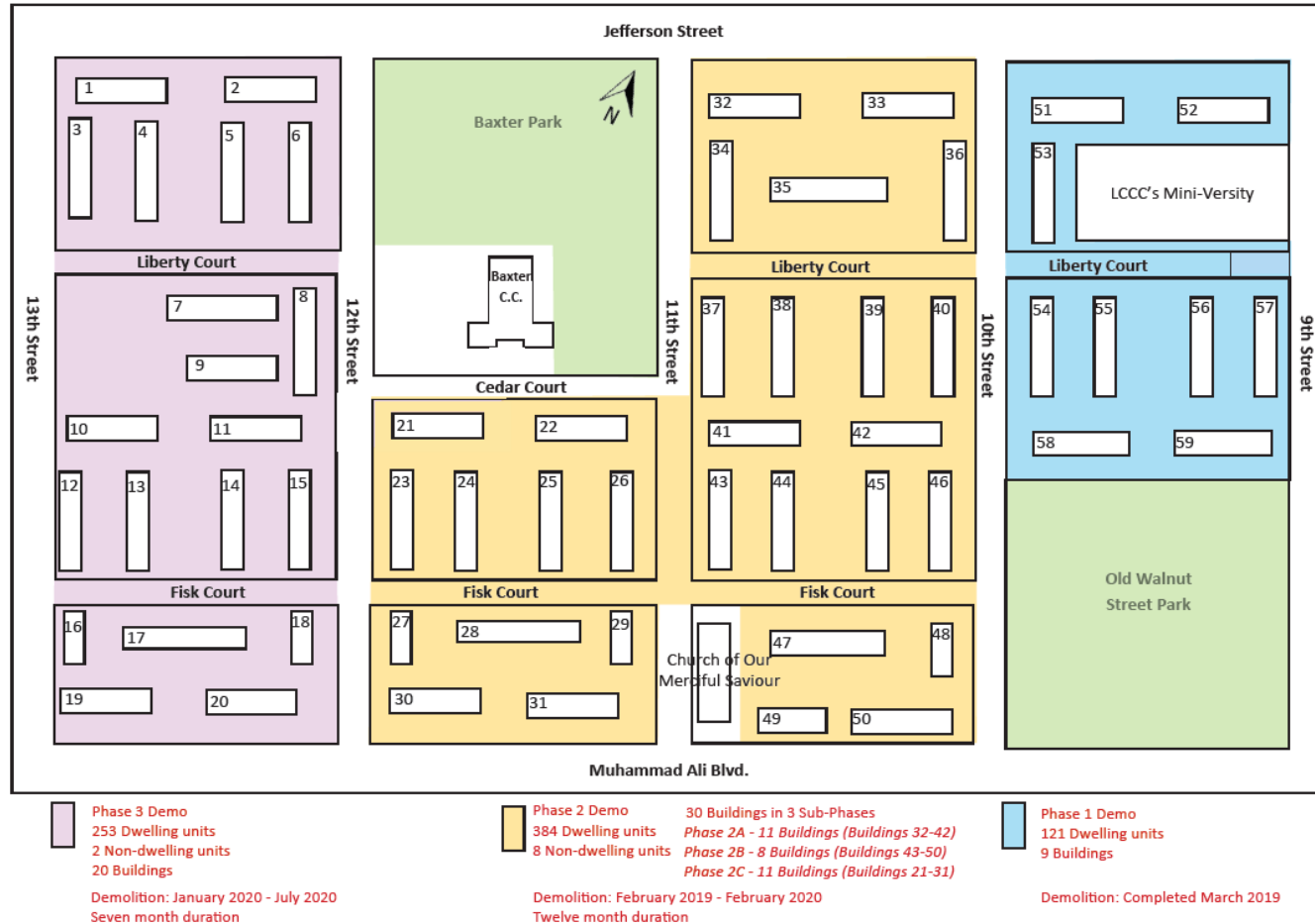
Construction Phase 1 - 7

Relocation Phase 1 - 3

- Known Impacts and Effects As of Jan. 1 2018**
- Phase I of Project Design and Construction
 - Phase I, II, and III of Demolition
 - Phase I, II, and III of Section 106 Compliance

Stage I: Demolition Update

Beecher Terrace Demolition Plan - Revised 4-2-2019



Beecher I Residential Update



Senior Building

- 4 Stories
- 117 Senior Units
- Management Offices
- On-Site Amenities

Phase I

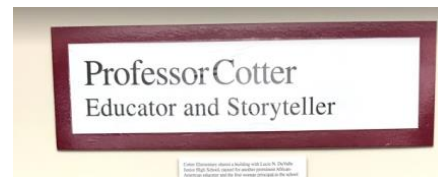
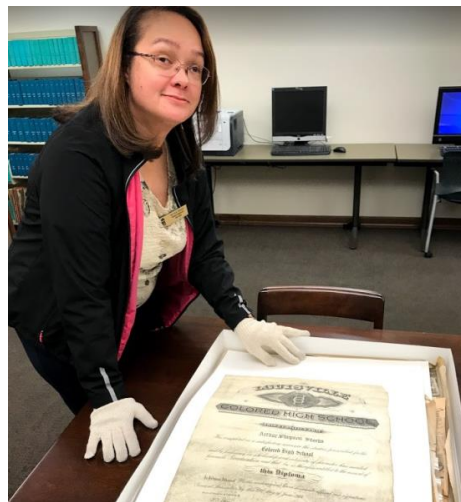
Conceptual Site Plan

Beecher I Residential Update



Western Library Archives

Natalie Woods – Branch Manager



Updates

Equipment Purchases

- Scanner
- CPU
- Monitor
- Video Capture Device
- Adobe Licensing for the machine

More equipment will also be purchased. This is just to get started.

Discussing the storage space needed. Enough to get started, will be increased in the future.

Digitized items will be available on the Kentucky Digital Library website. Western Archives will have its own page.

Website Update:

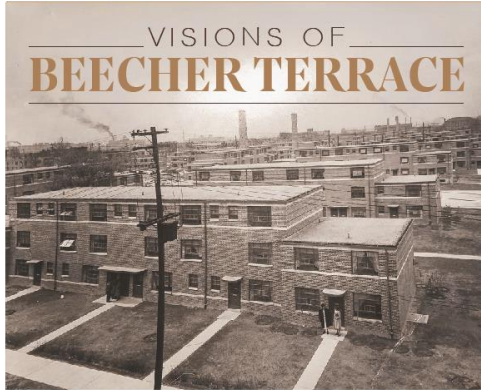
- Will be completely redesigned using WordPress and completed in-house by Library Staff.
- Allows for complete control of content and better use of money.
- Will purchase software needed to use on website, compatible with WordPress.

Will remake the Separate Flame video that is show on archive tours and make portions available on website.

Soledad O'Brien – filmed inside the branch during spring break.

Serendipity Films – Free for All: Inside the Public Library movie – will feature Reverend Thomas Fountain Blue & Western Library.

Visions of Beecher Terrace



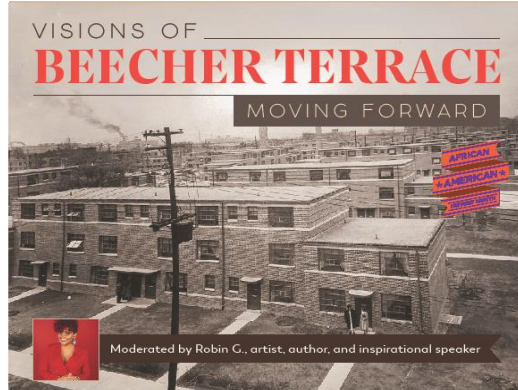
Filmmaker Lavel White joins a panel of guests to discuss Beecher Terrace, the housing development built in 1939 in the Russell neighborhood of Louisville. The panel will tell the history of Beecher Terrace through personal stories and experiences, examining the past and present, and looking toward the future.

Moderated by Renee Murphy, JCP's Chief Communications Officer

TUESDAY, OCTOBER 9 AT 5:30 P.M.



Western Library
Call (502) 574-1779 for more info.
604 South Tenth Street



Join us for an in-depth panel discussion as we continue the conversation of the past and future of Beecher Terrace, the housing development built in 1939 in the Russell neighborhood of Louisville. We'll also get a sneak preview of the new Beecher Terrace documentary by filmmaker Lavel White.

TUESDAY, FEBRUARY 26 AT 5:30 P.M.



Western Library
Call (502) 574-1779 for more info.
604 South Tenth Street

**Visions of Beecher Terrace – The
Promise of Tomorrow**
Moderated by Robin G.
July 30th: 5:30-7:30 pm

Join us for a new panel discussion as we catch up on the latest updates, where the project is currently.

We will also learn about artifacts which been discovered and what the new site may possibly look like once completed in Phase 1.

Lavel White will also share official scenes from his movie: The Beecher Terrace Story.

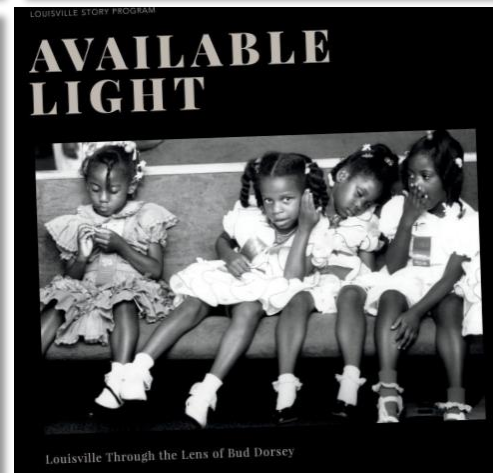
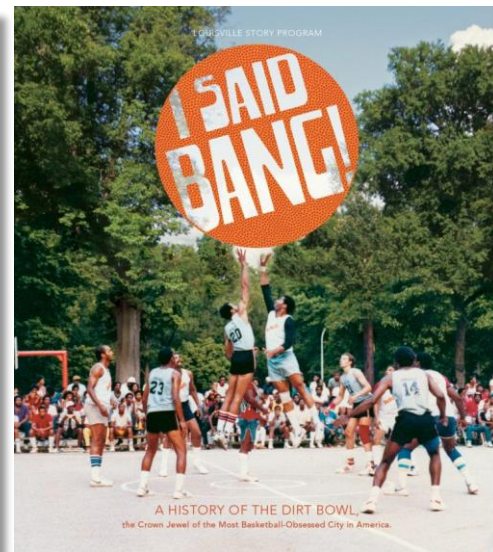
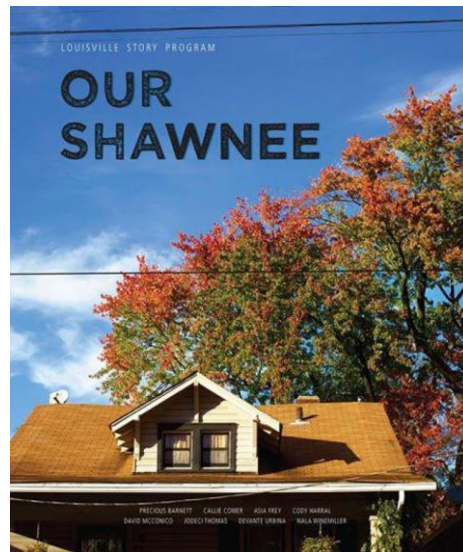
Beecher Terrace Documentary

Lavel D. White



Louisville Story Program

Darcy Thompson



LOUISVILLE
STORY
PROGRAM

Cornerstones of Russell

Progress Report for
June 2019 Beecher Terrace Consulting Parties Meeting





Work completed this past quarter

- Continued outreach to current Russell residents
- Continued outreach to photographers and their families
- Conducted and recorded additional interviews with Russell residents
- Transcribed some of the interviews we have conducted
- Began combing through relevant archived oral histories at the University of Louisville
- Established a year-long course at Central High School for the 2019-20 school years

A Sampling of People We Are Working With

- **Mr. Steve** – Beecher Terrace resident who repairs bicycles for neighborhood young people
- **Jackie Floyd** – president of Russell Neighborhood Association
- **Leborah Goodwin** – former student of Russell photographer Nat Brown, former member of West End Photographic Society
- **Sylvia Arnett** – proprietor of Syl's Lounge
- **Pam Haines** – proprietor of Sweet Peaches, grassroots service provider
- **Terry Silver** – retired professional boxer who learned how to box in a gym in the basement of a Beecher Terrace building
- **Elmer Lucille Allen** – native of W. Chestnut Street, acclaimed chemist and visual artist
- **Rev. Sanders/ Dr. Nacobi** – former pastor of Lutheran Church in Russell, proprietor of Ancient Kemetic Institute in Russell

Work slated for the upcoming quarter

- Establish weekly writing workshop at a senior living facility in Russell (likely Russell Apartments)
- Begin making our way through photographer Nat Brown's archives (starting in August)
- Major fieldwork focus on outdoor gathering spots in present-day Russell (24th St., Elliott Park, "Muhammad Ali Park", Mr. Steve's place at Beecher Terrace)
- Record walking oral histories with Russell residents
- Continue research (existing oral histories, street maps, etc.)
- Map out the Central High School course with our partner teacher

Data Recovery / Public Participation

Anne Bader

BEECHER TERRACE ARCHAEOLOGY

Corn Island Archaeology LLC, a cultural resources consulting firm in Jeffersonstown, is currently conducting archaeological investigations at Beecher Terrace. Their work is a necessary part of the Choice Neighborhood Implementation grant that was awarded to Louisville in December 2016. Grant dollars, along with additional funding, will be used to relocate Beecher households, raze the existing buildings and redevelop the site into a new energy-efficient, mixed-income housing community.

Archeological work first began in January 2017 when preliminary excavations were done across the site. The buried objects (artifacts) found during Corn Island's initial work demonstrated that Beecher is eligible for the National Register of Historic Place. After a year-long consultation process, further study was approved for the site.

Before Beecher Terrace was developed in 1939, the 31.4 acre site contained more than 380 historic lots on its 12 blocks. A sample of these lots have been selected for further excavation. The majority of the work will occur within the archaeological site designated "15JF923". Numerous buried structures, including privies, cisterns, and foundations from late 19th and early 20th century residential and commercial buildings, are located within this area.

Lots were chosen to sample segments of the population that once lived in the area. Extensive research through census and deed records have provided the names, occupations, and ethnicities of the former occupants, with included both eastern and western European immigrants, African American professionals, and native-born Americans.

A major objective of the current archaeological project is to tell the story of specific individuals and families, especially of the multiple educated professional African Americans who contributed to this community. The stories of eastern European immigrants will also be examined. Together, information on these two groups will fill a gap in the data on Louisville's historic population.

The artifacts recovered during this project will be washed, labeled, and stored at the University of Louisville to be available for future study. Some of the artifacts will go on display here at Beecher Terrace.

To learn more about this project, please go to www.VisionRussell.org where regular updates will be provided. Information on when you can visit the site to learn more from the archaeologists' work will be posted on the website. You can also watch for updates and news on the Facebook page for Corn Island Archaeology.



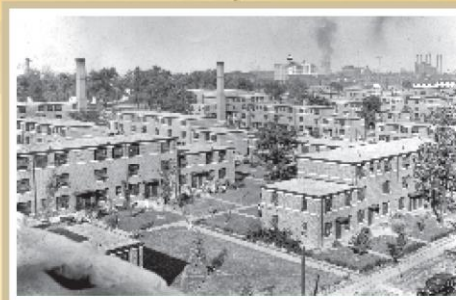
A Sam Booker pottery crock



Recovered Coca-Cola bottles



Chamber pots recovered from the site



Original Beecher Terrace buildings, circa 1940's.

Archaeology is a means of learning about how people lived long ago. It provides more detailed information on past day-to-day living than is usually found in history books or other written records.

By examining the objects that people left behind as trash, archaeologists can piece together details of their activities at home, in the workplace, and other institutions like school and church. Because there was no regular trash collection service, items that could not be burned were often thrown into the privy (outhouse), where they remain preserved for archaeologists to find.

The objects archaeologists find can help reveal a location's use, the dates it was occupied, the income level of its occupants, along with the kinds of food they ate, and sometimes, even their religious affiliation and ethnicity. Artifacts collected from a site can also show where people bought the necessities for daily life, whether it locally or from big cities in the east. Recovered medicine bottles can tell us information about the types of ailments that plagued residents. Changes in artifact collections from one decade to another might show periods of economic hardship or prosperity. All of this and more can be learned from the study of recovered artifacts.



Archaeologists uncovering a beehive-dome cistern at Beecher Terrace.



Corn Island Archaeologists at work in an excavation trench

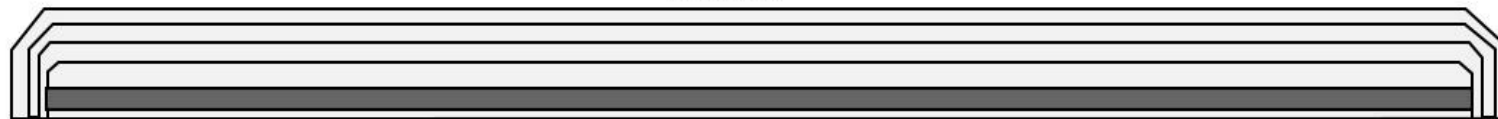


Recovered artifacts ready for washing and cataloguing.



Black and White

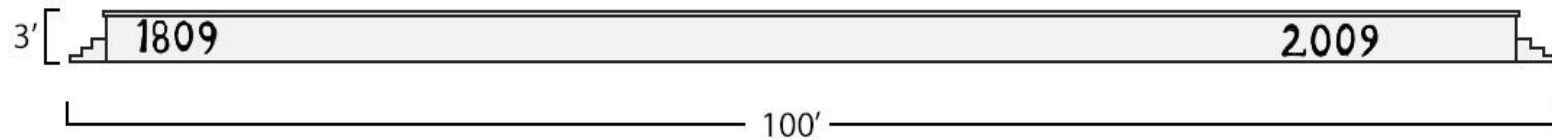
Top view



Front view (facing field)




Back view (facing street)



Profile (enlarged)



A satellite map showing a large, mostly green field. In the upper center, there is a red oval shape. A green arrow points to a spot on the right side of the field. The field is bordered by roads and some buildings on the left and top. The bottom right shows a steep, rocky hillside.

Second leg of the wall that
was destroyed in the 1980's

Image © 2019 DigitalGlobe

Google Earth

Imagery Date: 11/30/2003 lat 38.253005° lon -85.765994° elev 0 ft eye alt



Unidentified African
American softball
team posing at
Beecher Terrace in
1950 – Courtesy,
University of
Louisville Digital
Collections





Guy Tedesco working on the mural in 2009, photo courtesy Louisville Visual Art



Design preparation and tile assembly - Courtesy Louisville Visual Art.



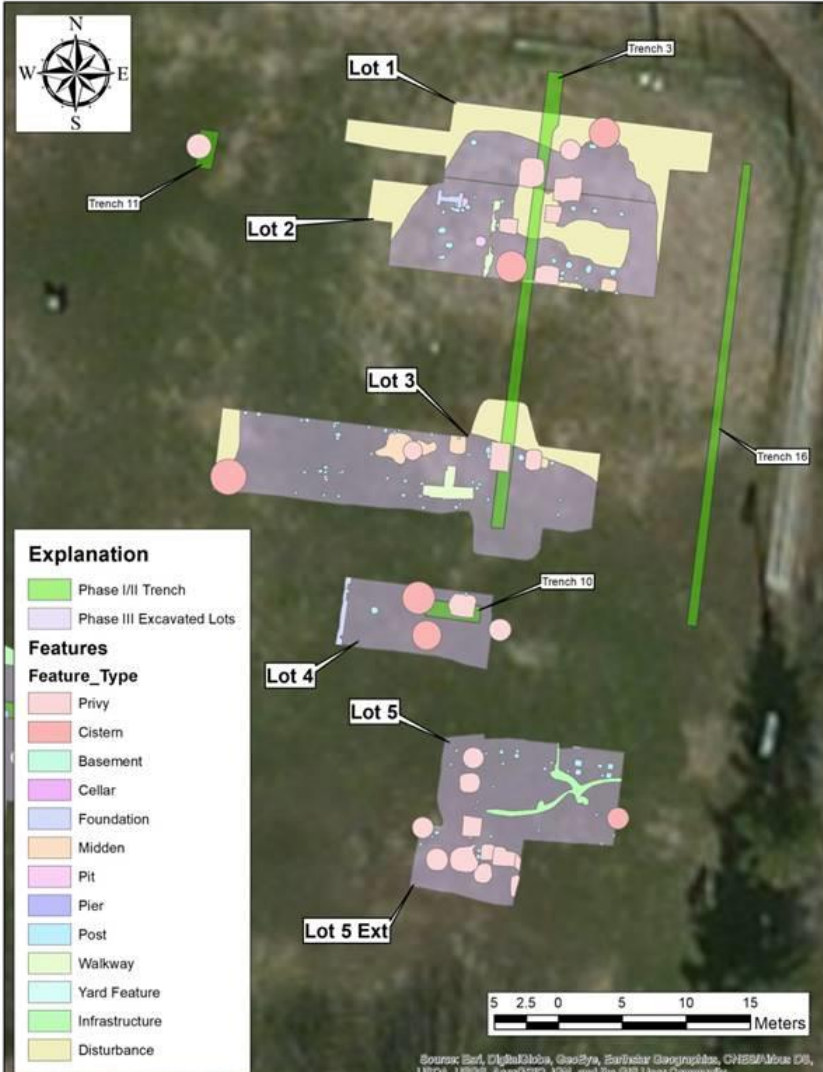
**Participants painting Farmington on the mural -
courtesy Louisville Visual Art.**



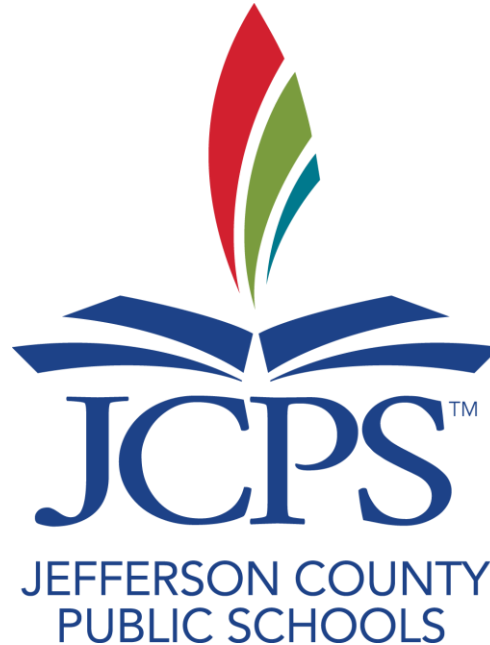
Lots Excavated
During the Data
Recovery of
Block 1

Old Walnut
Street Park





Educational Outreach & Data Recovery



The Davis Bottom History Preservation Project

- One-hour documentary (KET)
- Oral History DVD with resident interviews
- Companion Website
- Digital Media Archive

Beecher Terrace Educational Components

- 30-minute documentary film – Lavel White
- Louisville Story Program book – Darcy Thompson
- Digital Media Archive of African American History in the Russell neighborhood at Western Library – Natalie Woods
- Archaeological Data Recovery – Corn Island
- Elementary, Middle, and High School curriculum unit – JCPS and all
- Exhibit at Frazier History Museum, Permanent exhibit onsite at new Beecher Terrace / Baxter Community Center
- Companion webpages at www.visionrussell.org with information, images and educational materials

Public / School-Age Educational Module

Estimated Timeline

Summer 2019

Finalize scope of work and Intergovernmental Agreement with JCPS

Winter 2019

Second Phase of onsite archaeological work begins

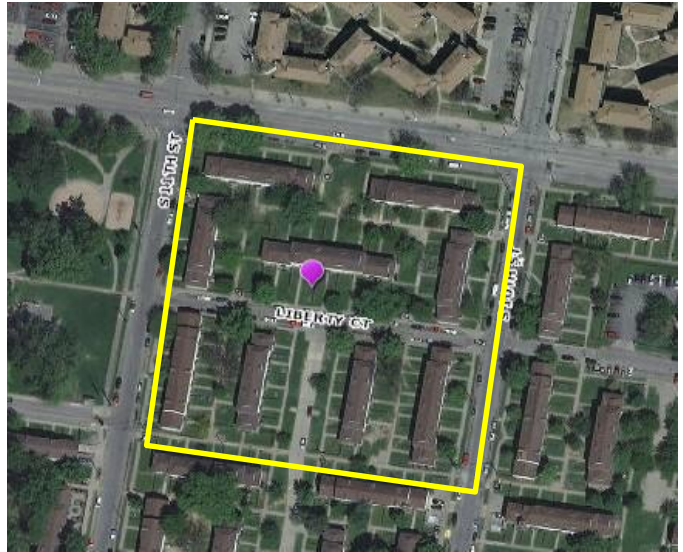
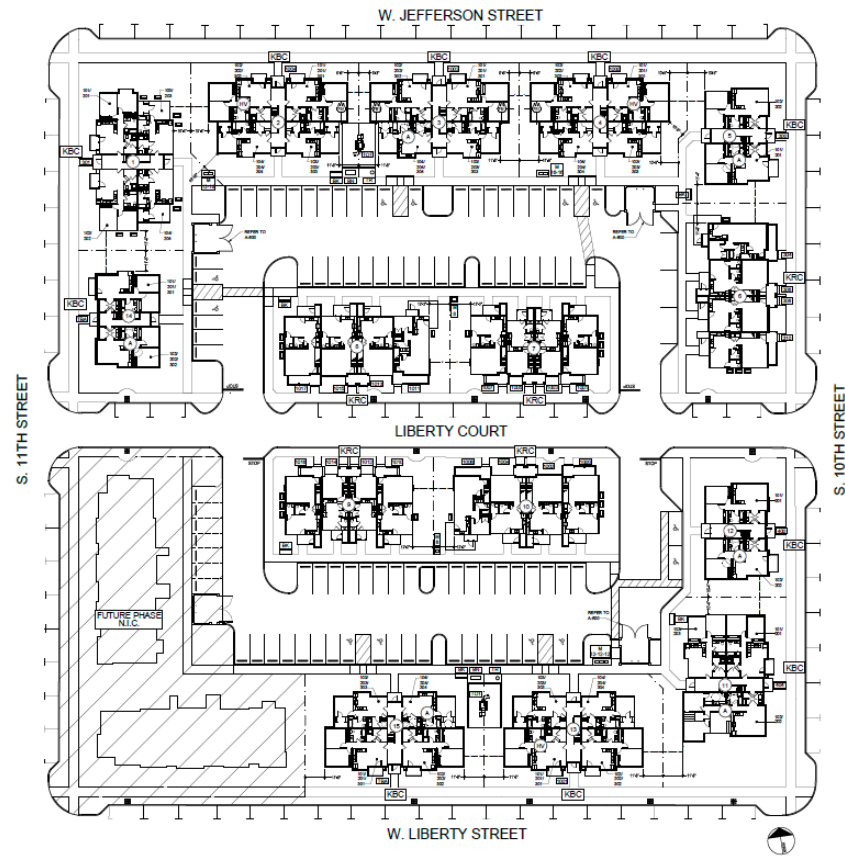
Fall 2020

Earliest estimated date for completed Archaeology Report

Fall 2021

Earliest date for educational module completion (one year after final archaeology report is completed – per LOR)

Beecher 2 Residential Update



Beecher 3 & 4 Update



BEECHER CONCEPTUAL SITE PLAN — PHASING

BEECHER SITE / LOUISVILLE, KENTUCKY / MAY 2019

PHASE 1 PHASE 2 PHASE 3 PHASE 4

Phases 1 - 4



Future Letter of Resolution

Quarterly Meeting Schedule

Future Quarterly Consulting Parties Meetings

First Thursday, 6:00 pm – 8:00 pm

- Early December 2018 – Thursday, December 6, 2018
- Early March 2019 – Thursday, March 7, 2019
- **Early June 2019 – Thursday , June 6, 2019**
- Early September 2019 – Thursday, September 5, 2019

Project CONTACTS



- RELOCATION BENEFITS - CATHY HEAD, (502) 569-3479
- CHOICE NEIGHBORHOODS - KATHLEEN ONEIL, (502) 569-3461
- EVENT CALENDAR – TINA WOODS, (502) 569-3460
- RUSSELL NEIGHBORHOOD – GRETCHEN MILLIKEN (502) 574-3158
- HISTORIC PRESERVATION – CYNTHIA ELMORE, (502) 574-2868



Write us at www.visionrussell.com