



## Russell Choice Neighborhood Coordinating Committee Meeting

July 21, 2021

Join via Zoom at <https://zoom.us/j/97802411642>

10:00 a.m. – 11:30 a.m.

---

**Welcome** – 2 min. (LMHA Staff)

### **Russell Neighborhood**

Critical Community Improvements (CCIs) - 10 min. (LMHA Staff)

- Historic Quinn Chapel Stabilization (Allison Smith) – Contractors have begun Phase I stabilization work. Phase I work is anticipated to be complete by end of 2021. Anticipated completion of Phase II work is July 2022.
- Smart City Public WiFi (John Hawkins/Ed Blayney) – LMG has sent letter of termination to previous contractor for non-performance. New plan for project is in development.
- The Village @ West Jefferson (Pam Bischoff) – Final punchlist items have been completed. The building is 100% leased. OVEC and Park Community Credit Union are now open, including the credit union's ITM and OVEC's playground. The Drippin' Crab, The Bridge, and Norton Health Care are in various stages of completing their fit-outs. Grand opening was held on July 9, 2021.



- Business Center & Plaza at LCCC (Pam Bischoff/Shawn Summerville) – \_\_\_ of the 14 suites are available. For information on leasing, please contact William Starks at 502/961-9313 (O) or 502/468-7031 (C).
- 18<sup>th</sup> Street Corridor Redevelopment (Laura Grabowski) – Streetscape improvements along 18<sup>th</sup> Street between Madison and Muhammad Ali Blvd., and two commercial development projects (1731 W. Broadway, 526 S. 18<sup>th</sup> St.) led by OneWest. LMG has begun an area-wide environmental review, which must be sent to HUD along with LMG leverage commitment letters to have CCI funds released. Streetscape improvements are ready to start upon HUD approval, and anticipated to be complete in Fall 2021.

Other News from Partners?

## **Baxter Community Center and Park Site Update – 5 min.** (*LMHA Staff*)

- James Graham Brown Foundation award of \$1,000,000 for Beecher's amenities
- Will be approaching other philanthropic organizations for additional funding
- Baxter Community Center (BCC)
  - SHPO has concurred with LMG's determination of No Additional Adverse Effect on the Baxter Community Center
  - LMHA is working with architectural team, The Beech, JCPS, AMPED and other potential service providers to develop final programming for spaces. Construction drawings will commence afterwards.
- Park site
  - Demolition complete, site graded and seeded. Fence will remain until construction is complete.
  - LMHA and LMG are developing an Intergovernmental Agreement to move forward on the Park. Construction drawings will commence afterwards
  - Gathering community input on name for Park
  - Changing orientation of playfield to North/South
- Communications and Community Outreach
  - Updates on BCC and Park site can be found at [www.VisionRussell.org](http://www.VisionRussell.org)
  - Article in upcoming issue of the Vision Russell newsletter
  - Banners going up on BCC and Park site soon

## **Implementation Grant – Housing**

- On-Site Housing – 5 min. (*Laura Kinsell-Baer*)
  - Phase 1 – Initial occupancy of 117 units is complete - 25 original BT households.
  - Phase 2 – Initial occupancy of 108 units began on April 12, 2021 and is nearing completion.
    - As of July 15th, 90 units are occupied and the remaining 18 households are being processed
    - All of the 43 PBV replacement units have been leased by original BT households
  - Phase 3 – (total of 185 units) - wood framing completed and window installation is underway.
    - Offer letters being sent out for first two buildings, which are projected to be available in August 2021.
    - Other Phase III units will be coming available between late 2021 and early 2022.
  - Submitting LIHTC applications to KHC in August 2021 for Phases IV & V.
- Reoccupancy – 3 minutes (*Pam Bischoff*)
  - 275 pre-applications have been received as of 7/16/2021. Of these, \_\_\_ have been housed in new BT replacement units or other housing produced through the Choice Neighborhoods initiative (market-rate and LIHTC units.)

- Extensive outreach has been conducted, in partnership with Urban Strategies, to all Beecher Terrace households on the master list who are presumed eligible. LMHA will continue to mail information to all households about upcoming housing opportunities.
- Off-Site PBV Replacement Housing – 5 min. ([Heather Hairgrove](#))
  - Total Approved Projects in Pipeline: 14 projects total – 945 replacement PBV's, 189 non-replacement PBV's, affordable without PBV's (LIHTC units) – 745, market rate - 0
  - 43 existing units leasing up
  - Three projects nearing construction start: 1) Zion Manor Senior Housing II, 34 new construction senior units in the Russell neighborhood; 2) Crossings at Mill Creek, 180 new construction family units (90 PBVs) off Manslick Road; 3) Lower Hunters Trace, 168 new construction family units (84 PBVs) off Dixie Highway
  - Donerail Apartments located off Taylorsville Road – construction underway – expected to start lease-up this fall, 312 units total – 100% tax credit, 164 PBV units
  - New Vision III – under construction – expected to lease-up this fall, 8 units total – 100% PBV, LAHTF and Louisville CARES

## Implementation Grant - People

- Urban Strategies Update - 10 min. ([TaLonda Holland](#), [Kristie Stutler](#))
  - Employment Target Goal = 80% Employment Rate. Current in June: 64% (138) Employed; 36% (77) Unemployed. Next Steps / Strategies are as follows:
    - Increase enrollment in childcare (Partners: OVEC and 4 C's)
    - Increasing connections for Health Supports including physical and mental health, substance abuse and those seeking disability (Partners: Flip the Script Recovery, Centerstone, Maryhurst, Michael Sullivan Law)
    - Target employment opportunities/employers that assist with barrier mitigation (Partners: Ahead Staffing, Transcend)
  - Early Learning - 61% enrolled in early learning programs. Only 3% of those enrolled are in unlicensed (family, church) childcare settings. 53% are in Early Headstart, Headstart, or Public School PreK.
  - Education -
    - July Resident Meeting - Upcoming School Year – Registration and Enrollment
    - August Resident Meeting – Out of School Programming
    - Increase of Onsite Education Hours with Education Specialist and Family Advocate with Play Cousins
  - Health -
    - Kroger Mobile Market
    - Walking Wednesdays
    - Facilitating Activities for Seniors (MOLO Village, Jencare)
    - Monthly Health Chats
    - COVID Vaccination Outreach
- Family Self Sufficiency Update – 4 minutes ([Dan Farrell](#))

**Next Coordinating Committee Meeting – Oct 20, 2021, 10 a.m.**



**Vision Russell Coordinating Committee**  
**July 21, 2021**

## Agenda

- *Welcome*
- *Critical Community Improvements Update*
- *Baxter Community Center and Park Site Update*
- *Implementation Grant - Housing Update*
- *Implementation Grant - People Update*







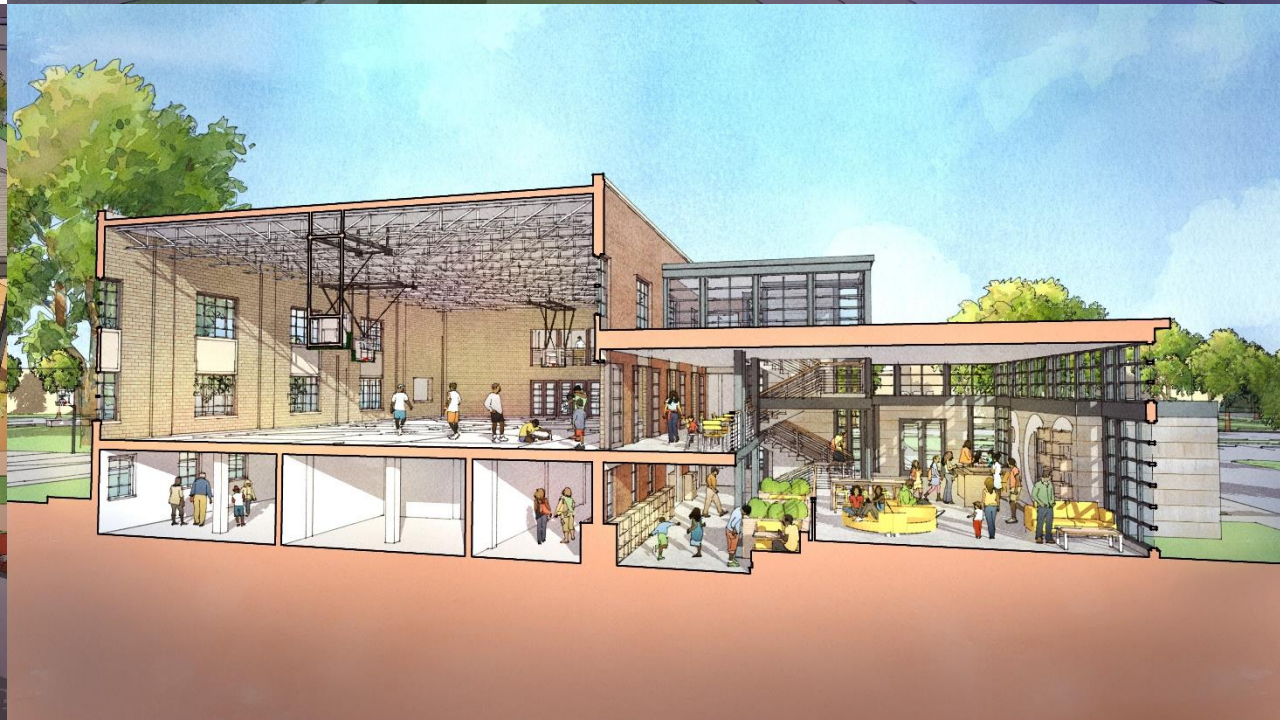
## Critical Community Improvements

- *Historic Quinn Chapel Stabilization*
- *Smart City Public WiFi*
- *The Village @ West Jefferson*
- *Business Center & Plaza at Louisville Central Community Centers*
- *18th Street Corridor Redevelopment*





# Baxter Community Center and Park Update







# Implementation Grant Housing Update

- *On-Site Housing*
- *Reoccupancy*
- *Off-site PBV Replacement Housing*







## Implementation Grant – People Update with Urban Strategies

- *Employment*
- *Education*
- *Health*

## Update with Urban Strategies

- *Family Self Sufficiency Program*



USI | URBAN STRATEGIES, INC.  
*Families at the Center of Results*



# People Plan Progress Update July, 2021

**Urban Strategies, Inc. (USI)**

**Kristie Stutler, Regional Vice President**

**Ta'Londa Holland, Senior Project Manager**

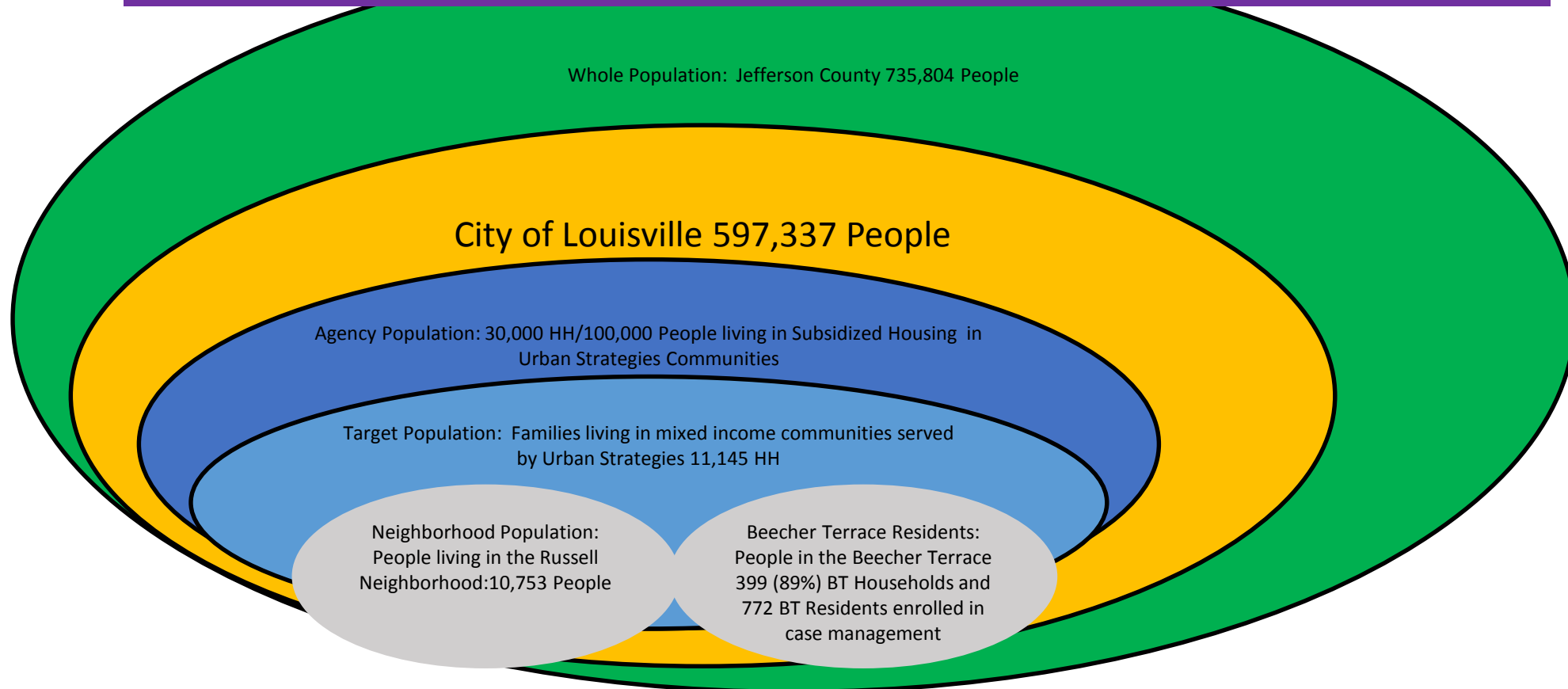


**USI | URBAN STRATEGIES, INC.**  
*Families at the Center of Results*



# Louisville Program and Population Result

Program and Population Result: All Families in Jefferson County are Stable and Thriving

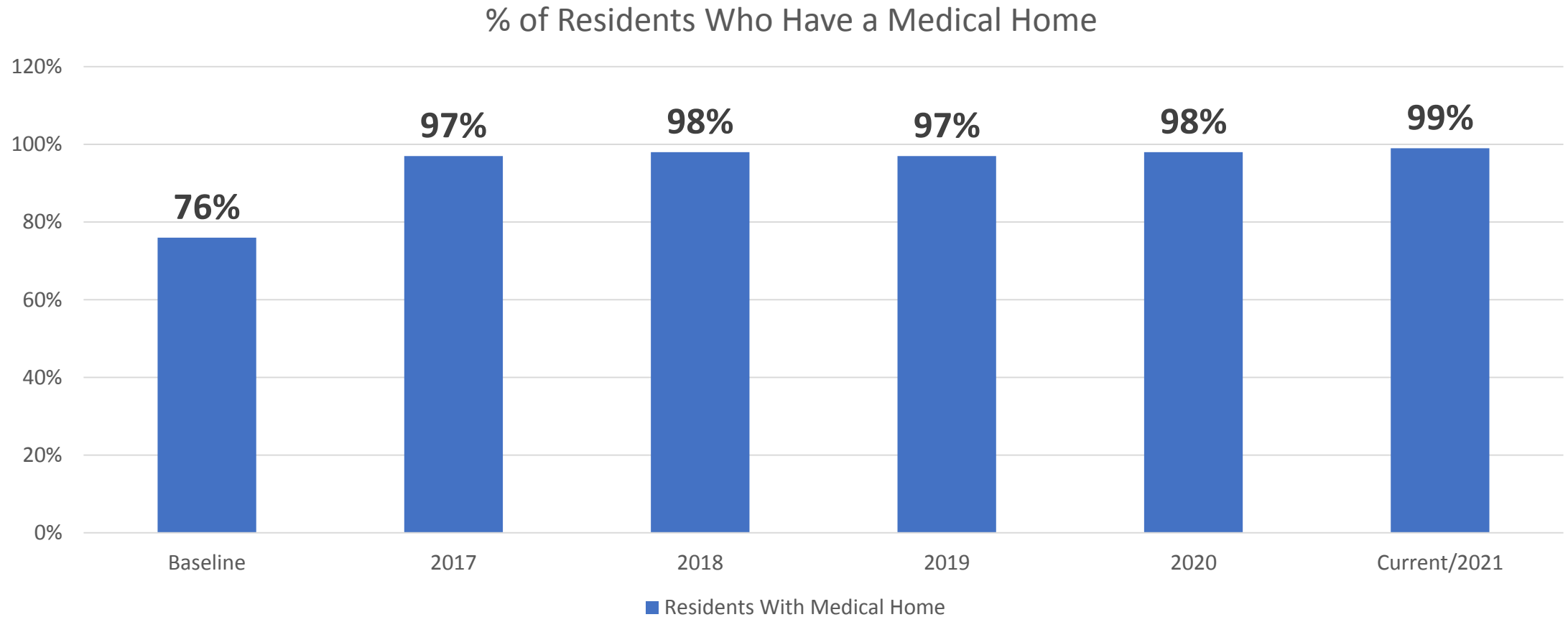


All data contained in this update is for families enrolled in Family Support Services with USI



# Goal 1: Children, Youth and Adults are Mentally and Physically Healthy

**Grant Target: 95%**





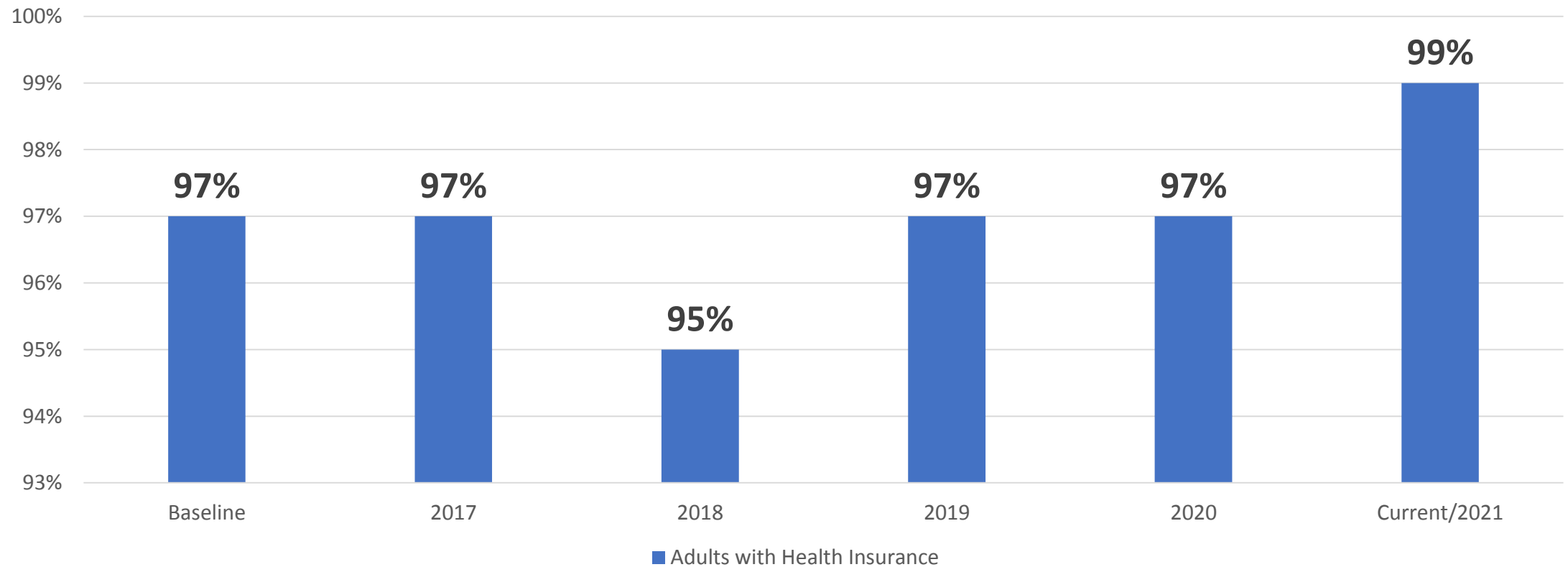


# Goal 1: Children, Youth and Adults are Mentally and Physically Healthy

USI | URBAN STRATEGIES, INC.  
Families at the Center of Results

**Grant Target: 100%**

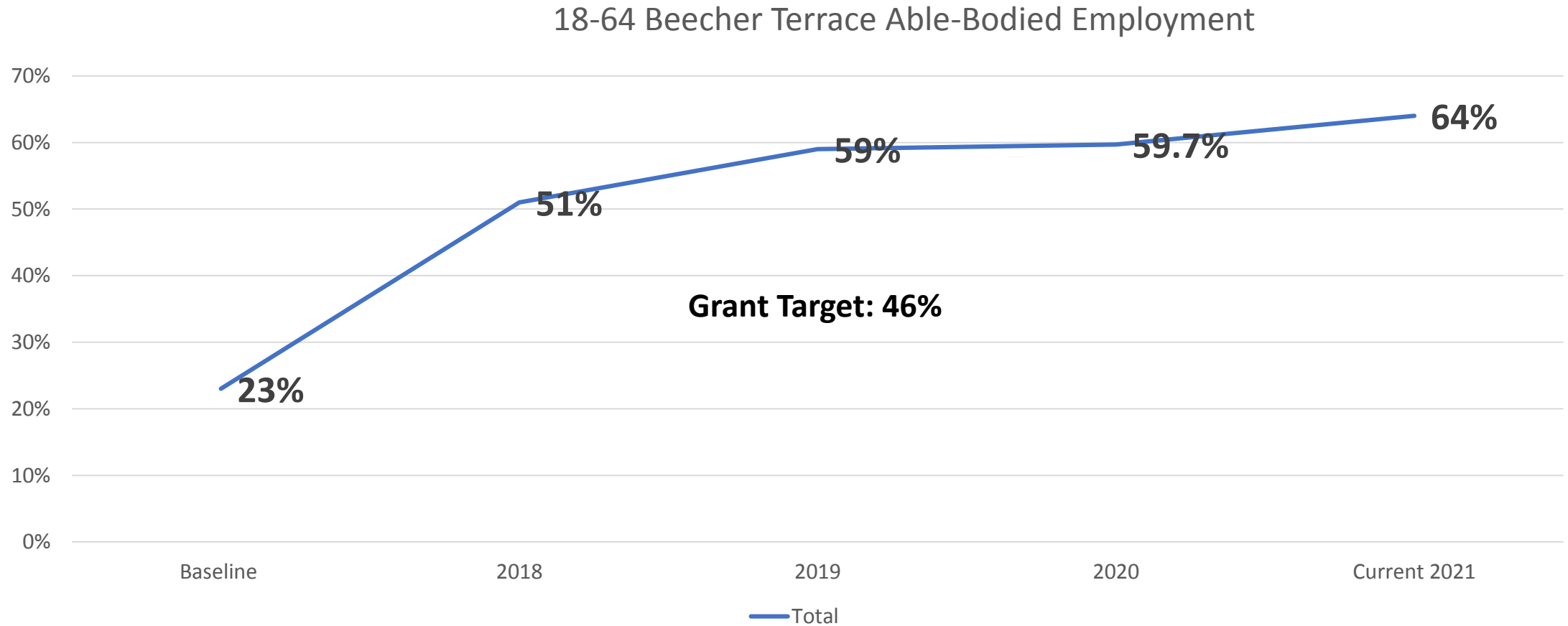
## Adults with Health Insurance



Data Taken from LEARN 7/20/21



## Goal 2: Households are Economically Stable and Self Sufficient

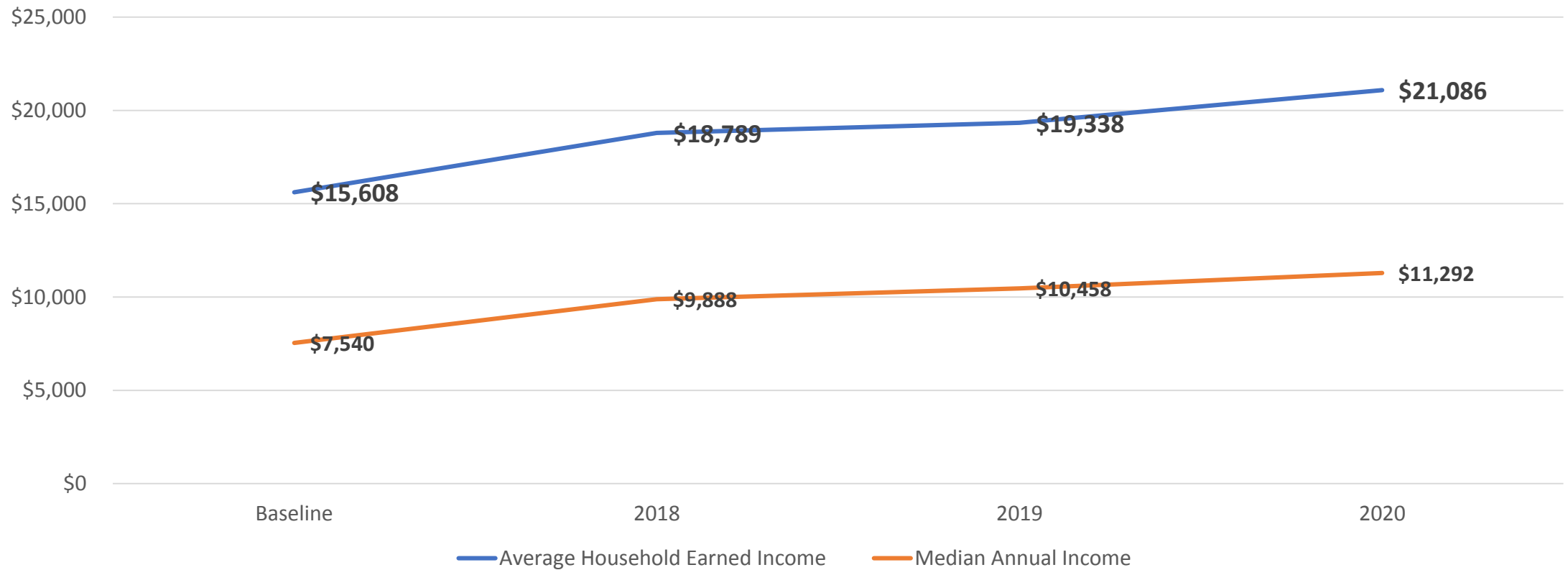






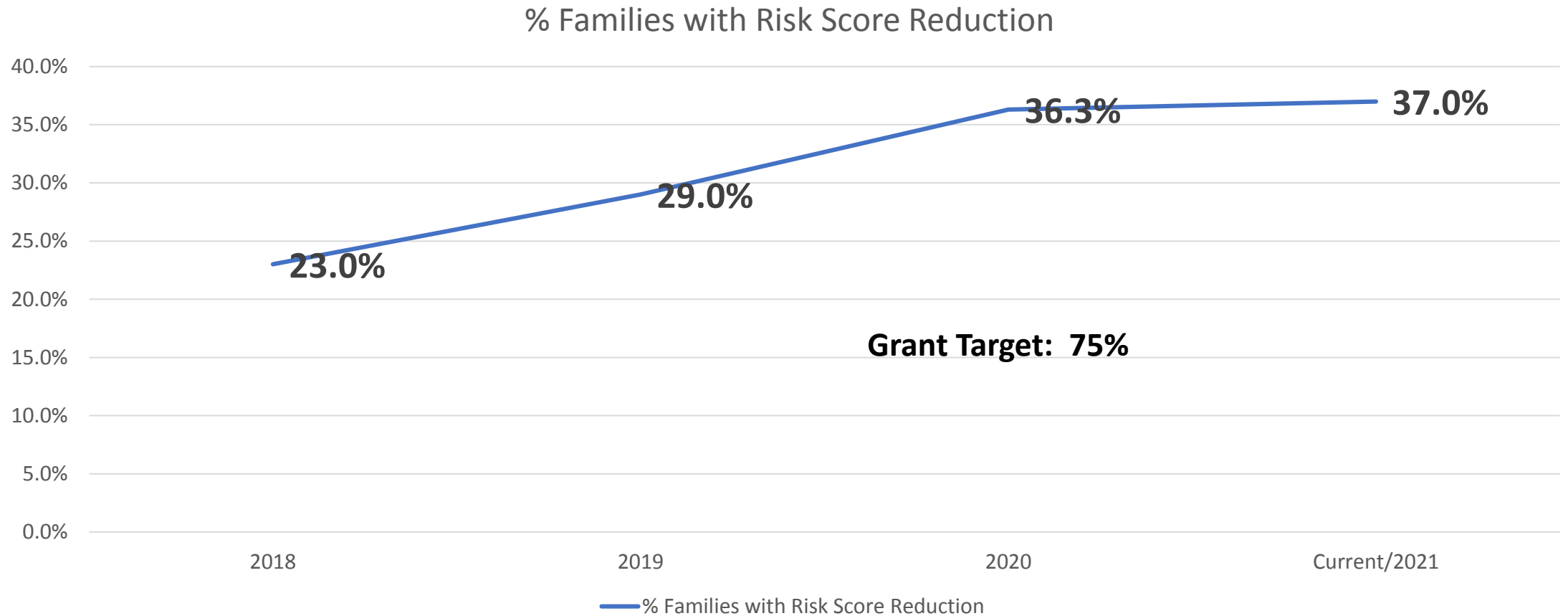
## Goal 2: Households are Economically Stable and Self Sufficient

Beecher Terrace Resident Income



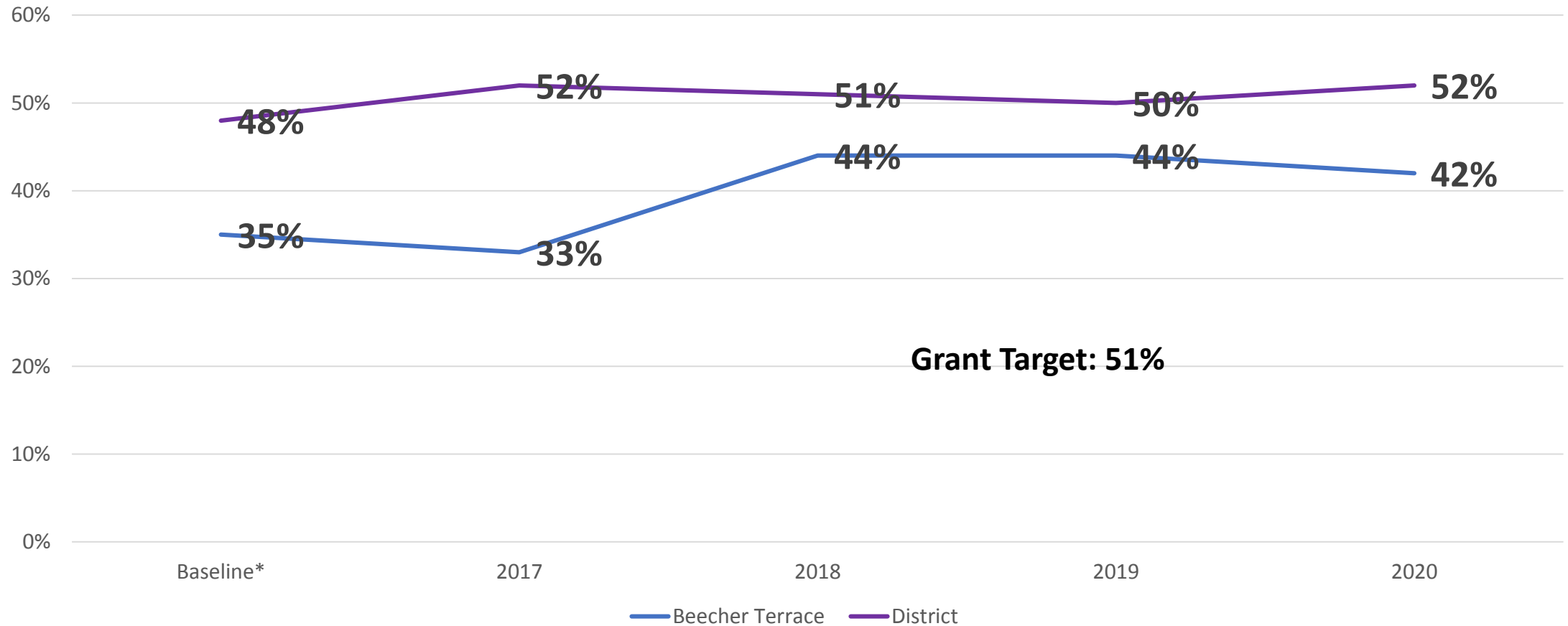


# Goal 3: Families Experience Self-determination, Stability and Upward Mobility





# Goal 4: Children Enter Kindergarten Ready to Learn

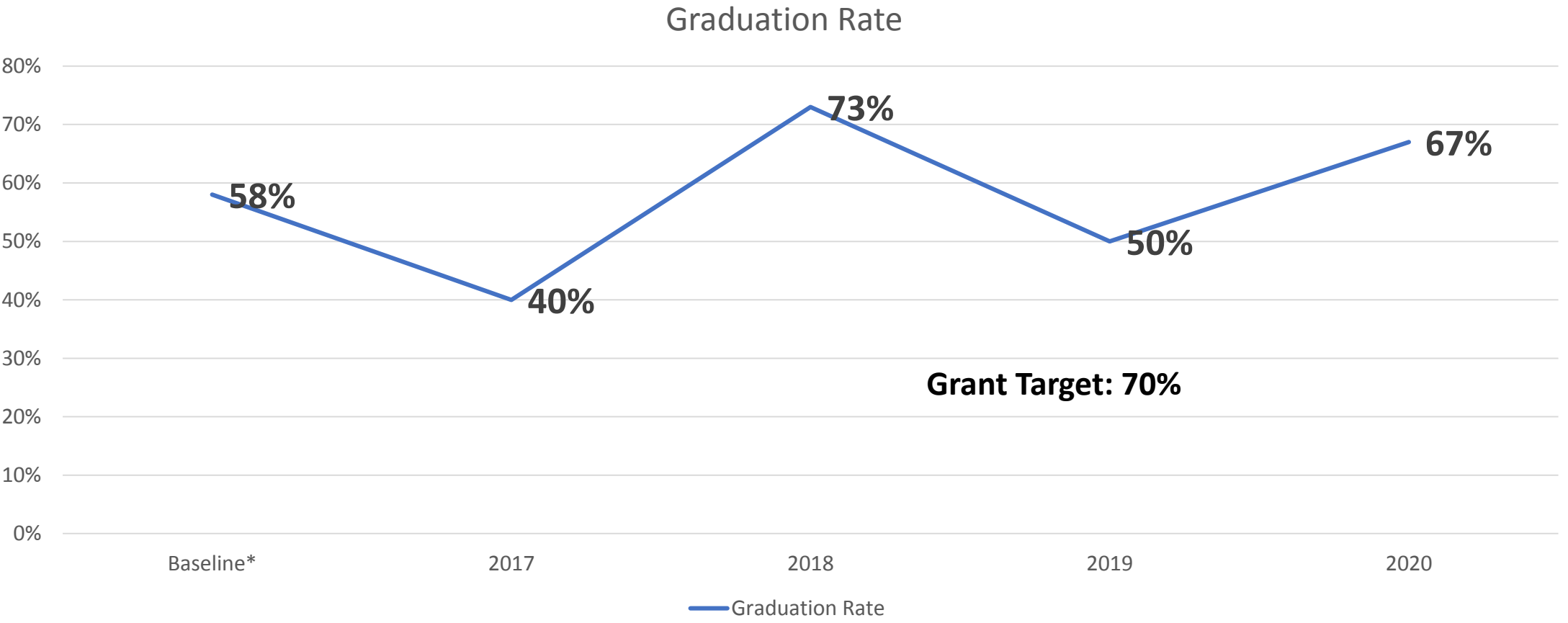


\*DATA Provided by JCPS. Baseline Data is not for the Beecher Terrace Cohort.





# Goal 6: Youth Graduate High School College and Career Ready



\*DATA Provided by JCPS. Baseline Data is not for the Beecher Terrace Cohort.



# Next Coordinating Committee Meeting

- *October 20, 2021, 10 a.m.*





[www.visionrussell.com](http://www.visionrussell.com)