



## **Russell Choice Neighborhood Coordinating Committee Meeting**

*Wednesday, February 15, 2023*

Join via Zoom at <https://us06web.zoom.us/j/86494804804>

*10:00 a.m. – 11:30 a.m.*

---

### **Welcome and Opening Remarks – (*Lisa Osanka*)**

- Congress has given all FY16 Choice Neighborhood Implementation grantees a one-year extension. New deadline is September 30, 2024. This will impact the People component and Critical Community Improvements component of our work in Russell.

### **Russell Neighborhood - 25 min.**

#### Critical Community Improvements (CCIs)

- Historic Quinn Chapel Stabilization (*Savannah Darr*) – Phase II work, which began in October 2022, is currently on hold as the rear portion of the building has proved to be less stable than originally expected. LMG is working with NPS to determine next steps.
- Smart City Public Wi-Fi (*Eric Burnette/John Hawkins*) – Data reports for January 2023 show a weekly average of 800 users accessing the Internet through Russell's 24 access points.
- Business Center & Plaza at LCCC (*Shawn Summerville*) – Thirteen of the fourteen suites leased. For leasing information contact William Starks at 502/961-9313 (O) or 502/468-7031 (C).
- 18th Street Corridor
  - Streetscape improvements and rental rehab updates (*Laura Grabowski/Kevin Sullivan*)
  - OneWest commercial rehab updates (*Evon Smith*)

#### REBOUND/Louisville Urban League (*Kevin Dunlap*)

- Homeownership updates. <https://www.reboundinc.org/find-a-home>
- Updates on REBOUND's headquarters and housing development at 1622 W. Market St.

#### MOLO Village (*Rev. Dr. Jamesetta Ferguson*)

- December 19<sup>th</sup> Groundbreaking Celebration for The Villages @ W. Jefferson TOO and other updates
- Upcoming event: MOLO Village African Gala at LCCC – March 25, 2023, 6-10PM
- SmART Stop improvements at St. Peter's United Church of Christ

#### Russell: A Place of Promise (*LMHA Staff*)

- Madison Street Warehouse Resident Workgroups
- Madison Street Pitch Sessions – February 22<sup>nd</sup>, 6:00-8:00PM on Facebook Live
- Russell Homeownership Meetings – Third Saturday of each month
- Small Business Accelerator

#### Louisville Central Community Centers'/Mini-Versity (*Shawn Summerville*)

- Youth Programs Open House – Tuesday, February 21<sup>st</sup> – 6:00-8:00PM
- Dr. Ralph de Chabert Trustees of Inclusive Equity Awards

- Save the Date - June 19<sup>th</sup>
- Accepting nominations through March 31<sup>st</sup>

Featured Partner Organization – Kentucky State University Extension Office (*Gill Finley, Jr.*) – 10 min.

- KSU's offices in LCCC's Business Plaza
- Planned programming
- Presentation

Updates from other Partner Organizations

- Other news?

### **Implementation Grant - People**

- Urban Strategies Update - 10 min. (*TaLonda Holland, Kristie Stutler*)
  - (See separate report)
  - Other updates.
- Beecher Family Self Sufficiency (FSS) Update – 3 minutes (*LMHA Staff*)
  - 20 original Beecher Terrace residents currently participating in LMHA's FSS program. 69 residents served since grant award.
  - 20 original Beecher Terrace residents have graduated from the program, receiving a total of \$135,827 in escrow.
  - 4 have purchased homes.

### **Baxter Community Center (BCC) and Park on the Former Porter Paints Site – 5 min.**

(*Norma Ward, Kathleen O'Neil*)

- Baxter Community Center (BCC) Renovation and Expansion
  - December 19<sup>th</sup> Groundbreaking Ceremony
  - General contractor firm of Churchill McGee began mobilizing the site in January 2023. Work is anticipated to be completed within 18 to 24 months.
- Park at 13<sup>th</sup> & Muhammad Ali Boulevard site
  - Civil engineering/landscape design firm of Element Design, PLLC began refining site plan in December 2022. Will be developing construction documents in early 2023.
  - Updated concept diagram was developed in conjunction with Metro Parks, LMHA staff, and the Beecher Terrace Leadership Group.
  - Announcements on the LISC Louisville/NFL grant awards are anticipated this month. Louisville could receive up to \$250,000 to help fund the park's synthetic turf mixed-sports playing field.
- Metro Parks will operate and maintain the Park and Baxter Community Center.
- Additional details on the BCC and Park initiative can be found at [www.VisionRussell.org](http://www.VisionRussell.org)

### **Implementation Grant – Housing & Reoccupancy**

- On-Site Housing – 5 min. (*Laura Kinsell-Baer & Ashley Foell*)
  - Phase I – 115 of 117 units leased, 23 (20% of leased units) to Original BT Households.
  - Phase II – 102 of 108 units leased, 47 (46%) to Original BT Households.
  - Phase III – 103 of 185 units leased, 39 (38%) to Original BT households.
    - All Phase III units are anticipated to be available by end of Nov. 2022.
- Off-Site PBV Replacement Housing – 5 min. (*Heather Hairgrove*)

- <https://app.smartsheet.com/b/publish?EQBCT=34bf66aeed314c669be1c2125484cb0a>
- Total Approved Projects in Pipeline: 14 projects total – 937 replacement PBV's and 188 non-replacement PBV's.

#### *Replacement Units*

- Crossings at Mill Creek (4801 Manslick Rd.) expected to begin leasing in May 2023, and Lower Hunters Trace (5416 Distler Ln.) expected to begin leasing in February 2023.
- Gateway on Broadway (1405 W. Broadway) Closing scheduled end of February.
- Donerail Run Apartments (4305 Donerail Run Dr. - off Taylorsville Rd. in J-town) – All 164 PBV units complete. Continuing with initial lease-up of the 42 units still available.
- New Vision III (7413-15 Feyhurst Dr.) - Leasing is expected to start at the end of February/first part of March.
- Zion Senior Housing II (2237 W. Muhammad Ali Blvd.) – All 34 PBV units complete. Continuing lease-up of the 21 PBV units still available. Ribbon cutting to be held on Monday, February 27<sup>th</sup>.
- Eclipse in Russell (2929 Magazine St.) –Under construction. Groundbreaking held February 14<sup>th</sup>.
- Gateway on Broadway (1405 W. Broadway) – Closing scheduled end of February.

#### *Non-replacement Units*

- Roosevelt – (226 N. 17<sup>th</sup> St.) Property approved for a 9% LIHTC award. Closing scheduled end of February.
- Prestonian (709 E. Gray St.)– Anticipated closing summer 2023.

**Next Coordinating Committee Meeting** – Wednesday, May 17, 2023, 10 a.m.

**Urban Strategies, Inc. (USI)**  
**Beecher Terrace Monthly Report**  
**January 2023**

**Executive Summary:**

This month, Urban Strategies, Inc. (USI) strategically increased outreach efforts to community partners, and community-based organizations in order to provide residents with direct connections to resources that address the comprehensive needs of Beecher Terrace families. Utilizing the Results Count Framework, USI continues working diligently to close equity gaps and create safe spaces for individuals and families to share their vision and work towards thriving outcomes evidenced by supporting access to employment and livable wage income, improving educational outcomes, and strategically addressing needs of youth and families. This report will reflect highlights that include the USI Legacy Planning (RPOP & Legal Aid Society), monthly resident meeting, and other advancements across all pillars and services.

- **USI Legacy Planning (held 1/24/23)** Urban Strategies, Inc., in collaboration with Russell: Place of Promise and the Legal Aid Society, facilitated a session to assist Beecher Terrace families in the life and transition planning process. During this session, residents completed a Life Will that would aid family members with their life transition process. Specifically, focusing on helping families to secure assets, including family recipes, and other family heirlooms. There were 9 total attendees
- **BINGO with a Purpose (held 01/26/23)** The pillar highlight for this session was health and wellness. Urban Strategies, Inc. invited the Family Health Center to come talk to residents about their center, the type of care they offer, and to connect residents to any additional medical resources and programming. There were 13 total attendees.
- **Monthly Resident Meeting (held 01/30/23)** The purpose of this meeting was to provide a direct connection to life planning and transition and resources, housing updates, and resident council updates. Special guests included the Louisville Urban League, Russell: Place of Promise, New York Life Company, McCormack-Baron. There were 20 total attendees.

There are 419 households and 804 individuals (92% of eligible households) enrolled in family support services (an increase of one household from last month). USI continues to exceed its target of 80% and will work to maintain 90% of eligible families enrolled and actively participating in supportive services. Moreover, USI continues to partner with both LMHA, MBM, and other property and management services to fully support residents throughout the relocation, re occupancy process. This support includes providing accurate and up to date information, aiding with navigation of housing and utility support programs, and assisting with lease cancellations and other barriers that may prohibit re-occupancy. More recently, the support also includes assisting residents through difficult predicaments that impacts the stability of the household.

**Family Support Services - Outreach and Engagement:**

Total Households in Grant Award 767	Total Eligible Households 474
# and % of HH and People in Case Management	419 (92%) and 804 participants

**Updates on Outreach and Engagement: (Key meetings are conducted to engage residents, increase residents in family support services or to support residents who are actively participating with USI):**

Urban Strategies, Inc. continues various outreach strategies to continue to engage and enroll all eligible Beecher Terrace families in comprehensive supportive services offered by USI and community partners. USI maintains a 92% enrollment rate of eligible households. Continuing to utilize the Results Count Framework, Urban Strategies, Inc. seeks to implement strategies that include providing equitable outreach solutions to inactive households, reactivating original BT households and enrolling new residents. Additional outreach strategies include:

- 1.) Providing a monthly calendar of meetings and events that are accessible for residents.
- 2.) Canvassing/Conducting door knocking to share the monthly calendar, event flyers, and information regarding available family support services.
- 3.) Utilizing ONE CALL systems to increase targeted outreach to identified populations.
- 4.) Better use of social media to engage and promote opportunities and successes of Beecher residents and supporting Choice Partners.

Urban Strategies, Inc. continues to collaborate with LMHA property managers, and other landlords to assist residents with all concerns impacting housing stability. USI staff continued to meet with residents and property management staff to process late rent situations and lease violations by developing a plan of action to rectify any violations. LMHA property managers and MBM both submit monthly reports that highlight residents requiring support due to late rent or other lease violations. USI staff then immediately follows up with resident and/or property management to support a resolution. USI staff participates in ongoing collaborative sessions organized to better support and coordinate rental support for both residents and property management. With limited rental support, USI continues to support residents by sharing accurate, up to date information and connecting families with additional linkages and resources that may lend to increasing housing stability.

**Economic Mobility:**

# and % of Able-Bodied employed residents (235 total)	2022 Target: 181 or 80% 152 or 65% of Beecher Terrace Work-Able Residents are employed (increase of 1% from last month)
# and % of 18–24-year-old youth in secondary education and/or job training (29 eligible)	2023 Target: 20 or 70% 13 or 45% of individuals between 18-24 are employed.

**2023 EMPLOYMENT TARGETS:**

- Increase working work-able to (182 or 80%)
- Increase the number of 18–24-year-old youth in post-secondary education and/or job training (22 or 70%)

Currently, 65% of those work able residents are employed. There were 4 job referrals to job placement services:

- 69% of those employed are working full time.
- 84% have been working for longer than a year, with 15% obtaining employment within the last 6 months.

USI strives to achieve the goal of employing 80% of Beecher Terrace workable households by executing various strategies to match residents with career interests and skill sets. Strategies include:

**Working to Remove Barriers that impact Employment:**

- (Childcare) Lack of childcare and transportation have been identified as the top 2 barriers to employment. USI has partnered with Play Cousins Collective to provide alternative educational opportunities for families with 2 through 5 yr. old youth that would create a pipeline toward quality full-time childcare or school.
- (Increase Career Training) In order to assist residents to return to the workforce, increase wages or transition careers, extensive job training will be necessary. USI recognizes the benefits of career training such as increasing productivity and skill level. Additionally, career training assists residents with keeping current in a world where both technology and societal expectations are rapidly changing. USI works to connect residents with career development opportunities that are resident driven and requested.
- (Increase Access to Employment) USI continues to seek employment opportunities that provide flexible scheduling, bus line accessibility and a pathway towards living wages. This month USI staff began hosting "Working Wednesday", a bi-weekly session designed to assist residents with the online job application and upcoming job fair registration. This month, USI worked to connect 4 residents to career opportunities with Louisville Metro Government.
- (Disabled and Chronically Ill) 16% of the unemployed work able population has self-reported as chronically ill or in chronic pain, currently seeking disability and ultimately does not wish to obtain employment. USI Family Support Specialists continue to support

residents throughout the disability application process which often includes assisting with paperwork and obtaining supporting documents, ensuring medical appointments are kept, and connecting to legal services when necessary.

- Homeownership Pipeline Urban Strategies remains committed to moving families to more thriving results in terms of Economic Mobility beyond obtaining employment. Strategic planning yielded a goal of connecting 25 Beecher Terrace families to the Homeownership Pipeline by the end of 2023. The Homeownership pipeline includes partnerships and resources that assist families at any point of the homeownership process. This ranges from budgeting, financial literacy and repair to connecting residents with lending officers and realtors that are all invested and aligned in advancing equity around wealth building and home ownership.
- This month there was one more family connected to the pipeline via home ownership programs through the LMHA Family Self- Sufficiency program. To date there have been 11 families connected to the Home Ownership pipeline..
  - Family Self-Sufficiency Program the FSS program helps families to increase their earnings and build financial capability and assets
  - Commonwealth Credit Union. The Commonwealth Credit Union has a community focus that offers second chance opportunities and benefits for the under/unbanked population such as checking/savings accounts, credit review/repair and other home owning options.
  - Homeownership programs and supports. Several Choice Partners and community resources have programs to support various stages of the homeownership process. Such resources include LCCC, Louisville Urban League, Goodwill Industries, Diamond Key Realtors, and others.

Generational Wealth Building Series (GWBS): Commonwealth Credit Union has agreed to sponsor an ongoing generational wealth building series. This series will be conducted onsite at Beecher Terrace. The targeted result for the GWBS is to engage more residents in the discussion and subsequent changes or actions that maximize the likelihood of building and increasing generational wealth such as debt management, credit repair, investment and savings and home ownership. Although the series will be open for all ages, there will be targeted strategies aimed to link youth 16-24 to assist with establishing best practices as they are transitioning into adulthood. USI and Commonwealth will finalize the series design this month and implement it later January, or early February.

## **Education:**

Updates on Education: (Key meetings and activities conducted to support improving educational outcomes for children this month)

USI is implementing the following strategies to advance educational outcomes and increase parent engagement:

**Ages and Stages Developmental Screenings:** Urban Strategies, Inc. will continue connecting families to Play Cousins Collective to conduct the Ages and Stages Survey for development screenings with parents and children ages 0-5. Moreover, USI's Project Manager will be able to make more real time referrals and linkages to address identified needs and prepare the youth and family for kindergarten.

**Increase Early Childhood Enrollment:** USI is working to partner with PlayCousins Collective for the pilot program, "My First Teacher", which allows our youth and families to make proper transitions through the early learning pipeline. 77% of 0-4 Beecher Youth (51/66) are enrolled in early learning programs. This month denotes an increase of youth enrolled in early learning programs, and licenses child care centers. As FSS staff follow up on all eligible youth, many families report that their paramours and familial relatives are caretaking for the youth.

Breakdown as follows:

- Early Head Start: 56%
- Headstart: 8%
- PreK in Public School: 7%
- Licensed Child Care Center: 29%
- Licensed Child Care Home: 1.2%
- Unlicensed (family, church) 7%

USI continues to work closely with OVEC and other partners to assist youth with registration to Headstart/Early Headstart and Licensed Child Care. USI staff are working to follow up with all referred families to further assist with missing documentation and facilitate connection with early childhood partners. The primary barrier tends to be obtaining all supportive documents such as birth certificates or complications that arise with obtaining childcare subsidies. Also due to limited funding for the subsidy program, many families are deemed ineligible.

FSS staff continue to follow up with all referrals to further assist with obtaining documentation and other needed documents. USI is also working with partners to conduct "maintaining important documents" training to assist families that often struggle with having needed documentation to be properly linked to community resources and support.

### **Cascade System/Academic Proficiency**

As reflected in JCPS's Cascade System, 30% of BT's middle and high school students maintained an average GPA of 2.0 or higher. 4% had 4.0 (all A's), and 18% had between 3.0-3.9 and lastly 28% had between a 2.0-2.9 GPA. Of the remaining 48%, 36% were on the border of passing. USI staff will continue to utilize data from the Cascade system to triage and prioritize outreach linkages to youth resources.

Quality OST and Social and Emotional Supports:

- Girl Scouts of Ky: Onsite (12 slots – 14 active youth)
- Sowing Seeds with Faith (slots limited per week)



**Health and Wellness:**

# and % of residents who have health insurance	(636) – 99% of Residents have Health Insurance
--	--

**Updates on Health and Wellness: (Key meetings and activities conducted to support improving health and wellness outcomes for residents this month)**

58% of Beecher Terrace adults report having a chronic health condition. The most noted illnesses include high blood pressure, asthma, and depression. 15% of youth also report having a chronic illness, as well. Understanding that housing is a social determinant of health has long been established. Factors such as housing stability, quality, safety, and affordability all affect health outcomes. Therefore, in addition to efforts to stabilize housing, USI utilizes a holistic approach to execute strategies aimed to provide support that looks at the health and wellness of the whole person; the physical, emotional, social, and spiritual well-being. This month's strategies include:

**Strengthening Partnerships: Supporting Seniors** USI continues to strengthen relationships with partners and resources targeted for Seniors. This month the following partners supported Beecher Seniors:

- JenCare Provide resources and information increasing access quality health care

**Increasing Food Security:**

- Kroger Mobile Bi-weekly mobile unit stops at and surrounding Beecher Terrace to increase access to affordable healthy food
- Dare to Care weekly food deliveries

**Conducting Monthly Targeted Health Chats.** Each month a topic is chosen, in addition to selected residents and families. Through collaborative efforts with Passport, YMCA, Family Health Centers and JenCare, USI staff provide information regarding health benefits, resources, and tools, when needed. This month's Health Chats focused on "Mental Health, Self Care, and Stress Relief". 3 Residents received intensive Health Chats this month.



**Vision Russell Coordinating Committee**  
**February 15, 2023**



# Agenda

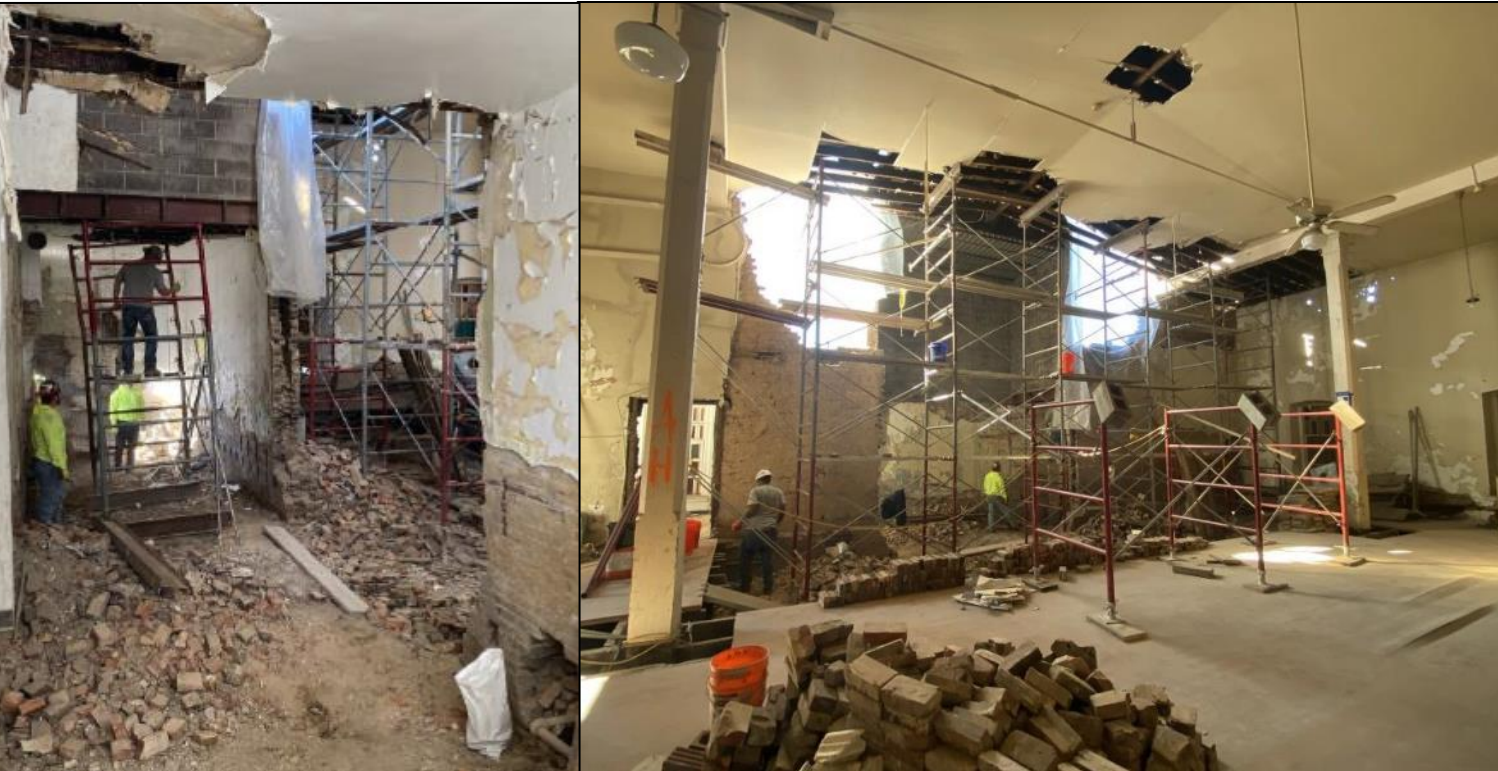
- Welcome
- Neighborhood
  - *Critical Community Improvements (CCI's)*
  - *REBOUND*
  - *MOLO Village*
  - *Russell: Place of Promise*
  - *LCCC*
  - *Featured Partner Organization – Kentucky State University, West Louisville Office*
  - *Other Neighborhood Updates*
- People
- Baxter Community Center & Park at 13<sup>th</sup> and Muhammad Ali
- Housing & Reoccupancy







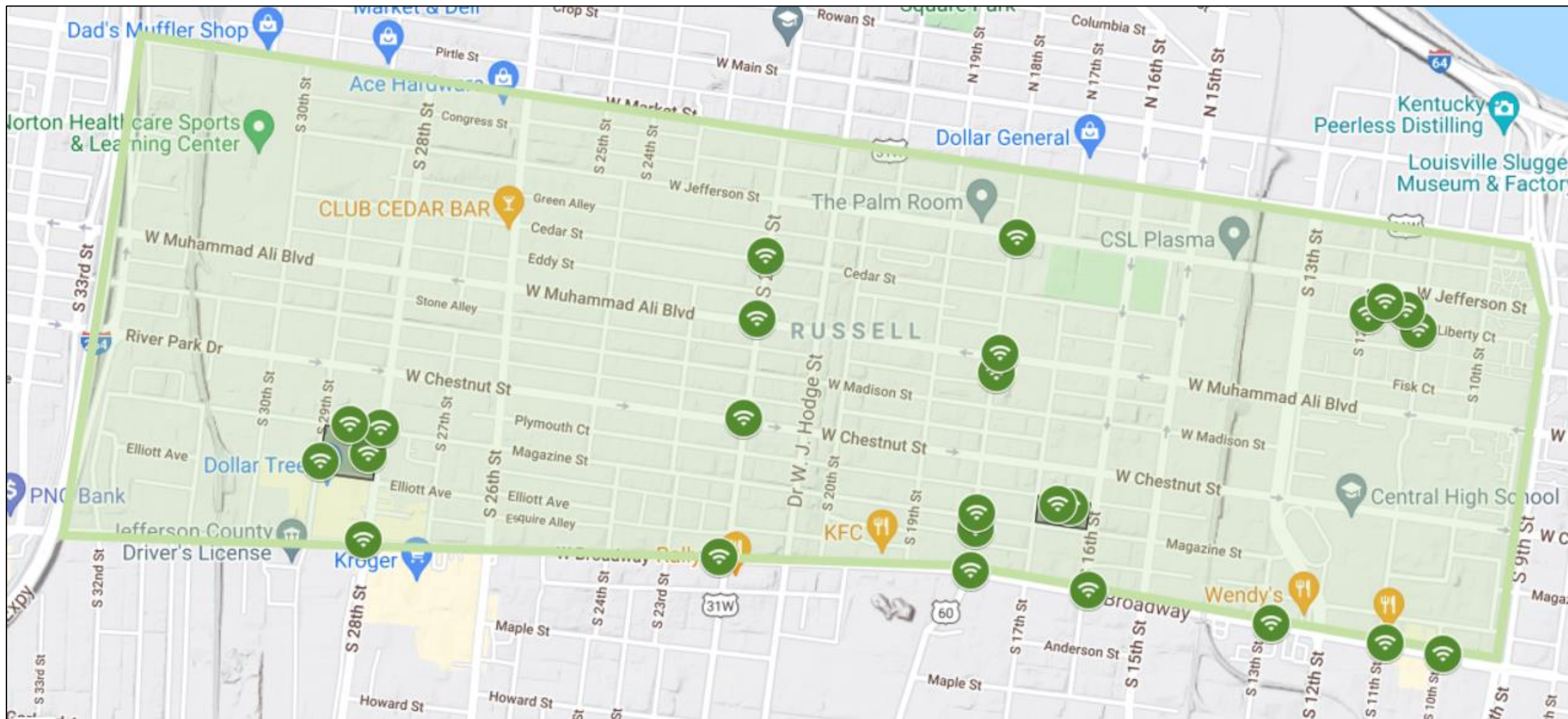
# CCI's - Historic Quinn Chapel Stabilization







# CCI's - Smart City WiFi







LOUISVILLE CENTRAL  
COMMUNITY CENTER

# Business Plaza at Louisville Central Community Centers







# 18<sup>th</sup> Street Corridor Streetscape Improvements

Stripe and Post  
Curb Extension

524

522

520

518

516

1812

510

508/504

1800

W Muhammad Ali

W Muhammad Ali

(Cobra Head on Pole)

22' Typ.

15' Min. 20' Typ.

S 18th St

8' x 5' Tree Well (Typ.)

515

Proposed Street Light Location  
(50' Typ. Spacing - 100' Typ.  
Spacing Same Side)

Replace Sidewalk  
Per Public Works

Existing  
Guy Anchor

Existing Street Light  
(Cobra Head on Pole)

W Madison St

W Muhammad Ali Blvd

Replace Existing Tree Well  
With 4" Thk. Sidewalk, Typ.



# 18<sup>th</sup> Street Corridor Commercial Rehab









MOLO VILLAGE PRESENTS

# AFRICAN Gala 2023

MARCH 25TH  
7:00PM - 10:30PM

AN EVENING OF  
*Black Excellence  
and Elegance*

SPECIAL GUEST PERFORMANCE BY  
**UNLIMITED SHOW BAND**



HELD AT **LCCC** 1300 W Muhammad Ali Boulevard Louisville, KY 40203

ADMISSION IS \$100 PER TICKET | \$850 PER TABLE  
PURCHASED AT MOLO VILLAGE OR EVENTBRITE



## MOLO Village







**Russell: A Place of Promise**

[www.russellpromise.com](http://www.russellpromise.com)





# REGISTER NOW!

Pre-register using the link in our bio!



Kids Arts Academy



Need More Information?

Join Us

OPEN HOUSE

Tuesday, February 21st  
6pm-8pm

Food Will Be Provided



Interactive &  
Engaging Activities

Academic Coaching

- ✓ Visual Arts
- ✓ Dance
- ✓ Drama
- ✓ Technology
- ✓ Academic Coaching
- ✓ Intro to Biotech

ENROLL  
NOW



Teen Leadership Council

LEADING WITH VISION - EDUCATING ON ECONOMIC MOBILITY - ADVANCING EQUITY - DEVELOPING QUALITY



# Louisville Central Community Centers



## Call for Nominations

2023 nominations are open! The Trustees of Inclusive Equity Society represents an elite group of professionals who are changing the narrative and opening doors for all where opportunities did not exist. Nominate your champion of diversity, equity, and inclusion today for recognition at the 2023 Dr. Ralph de Chabert Trustees of Inclusive Equity Awards!





**KENTUCKY STATE  
UNIVERSITY**

Cooperative Extension Program

# Community Resource Development

Program Leader: Gill Finley

2-15-2023



**KENTUCKY STATE  
UNIVERSITY**

Cooperative Extension Program

# Extension Program Values

## **Mission Statement**

Kentucky State University (KSU) Cooperative Extension Program strengthens underserved communities, families, farmers, individuals, and youth to improve their quality of life with state-of-the-art-research-based educational programs.

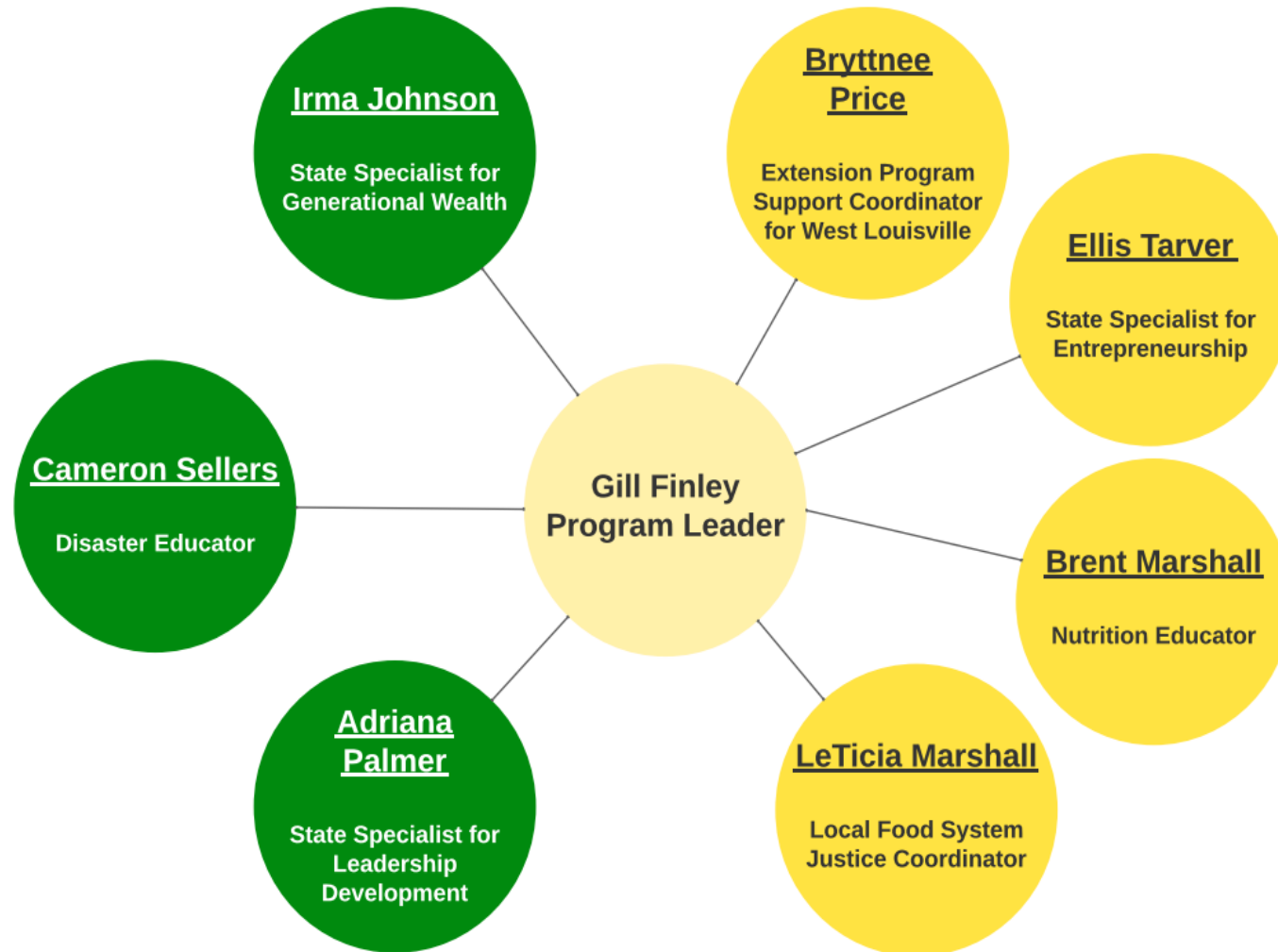
## **Community Resource Development**

Kentucky State University Community Resource Development program is designed to provide research base community and economic development information and programs to the Kentucky Commonwealth underserved, underrepresented, and minority communities.



# KENTUCKY STATE UNIVERSITY

Cooperative Extension Program





# CRD Team Educational Programming

- SB 270
  - Education
  - Health and Wellness
- Disaster Preparedness and Education
  - EDEN (Extension Disaster Education Network)
  - Rapid Response Funds
    - 1<sup>st</sup> 1890 to receive these funds if approved
- Generational Wealth
  - Expungement
  - HEIRS property
- State Specialist-Entrepreneurship
  - LEARN/EARN
    - Non-profit building
  - S.T.A.B.L.E.
    - K-12 programming
- State Specialist-Leadership Development
  - LEAD Project
    - Campus Life and 1<sup>st</sup>/2<sup>nd</sup> year students
  - King Center (Downtown Frankfort)
    - Elementary and middle school
- Local Food Systems Justice Coordinator
  - Urban Ag and Food Systems Conference
    - September 2023
  - Produce Safety Alliance (PSA) Training
    - For farmers in Jefferson County to help stay compliant with the FDA



# Partnership with Louisville Central Communities Center

---

KSU and LCCC aim to enrich the community through identifying, addressing, and piloting programs/resources geared to uplift the underrepresented.



# USDA NON-DISCRIMINATION STATEMENT

In accordance with Federal civil rights law and U.S. Department of Agriculture (USDA) civil rights regulations and policies, this institution is prohibited from discriminating on the basis of race, color, national origin, religion, sex, age, disability, and reprisal or retaliation for prior civil rights activity. (Not all prohibited bases apply to all programs.) Program information may be made available in languages other than English. Persons with disabilities who require alternative means of communication for program information (e.g., Braille, large print, audiotope, American Sign Language, etc.) should contact the responsible county or state contact that administers the program or USDA's TARGET Center at (202) 720-2600 (voice and TTY) or contact USDA through the Federal Relay Service at (800) 877-8339.

To file a program discrimination complaint, a complainant should complete the USDA Program Discrimination Complaint Form, AD-3027, which can be obtained online at <https://www.ocio.usda.gov/document/ad-3027> , from any USDA office by calling (866) 632-9992, or by writing a letter addressed to USDA. The letter must contain the complainant's name, address, telephone number, and written description of the alleged discriminatory action in sufficient detail to inform the Assistant Secretary for Civil Rights (ASCR) about the nature and date of an alleged civil rights violation. The completed AD-3027 form or letter must be submitted to USDA by:

- (1) mail: U.S. Department of Agriculture, Office of the Assistant Secretary for Civil Rights, 1400 Independence Avenue, SW Washington, D.C. 20250-9410; or
- (2) fax: (833) 256-1665 or (202) 690-7442; or
- (3) email: [program.intake@usda.gov](mailto:program.intake@usda.gov).



National Institute of Food and Agriculture  
U.S. DEPARTMENT OF AGRICULTURE



# Other News From Partners





# Implementation Grant – People

## Update with Urban Strategies

- *Employment*
- *Education*
- *Health*



USI | URBAN STRATEGIES, INC.  
*Families at the Center of Results*





USI | URBAN STRATEGIES, INC.

*Families at the Center of Results*

## **Coordinating Committee Meeting**

February 15, 2023

**All children and families will be STABLE and THRIVING.**





USI | URBAN STRATEGIES, INC.

*Families at the Center of Results*

USI Louisville  
highlights for this  
quarter...

# USI Staff-Wide Retreat



From November 27th – November 29th USI staff participated in a system wide staff retreat which consisted of sessions across two days designed to increase their skills in resident engagement, racial equity, effective data entry and analysis, trauma responsiveness, addressing adaptive challenges. Further, in the staff retreat, updated USI system processes were shared with participants.

# Choice Means Choice Conference



USI | URBAN STRATEGIES, INC.

*Families at the Center of Results*

The Choice Means Choice Conference, "Anchoring Equity and Culture" brought together Choice Neighborhood grantees across the country and ran from November 30th – December 2nd. Participating staff heard moving keynotes from Matthew Desmond's Pulitzer Prize winning bestseller of *Evicted: Poverty and Profit in the American City*, Dr. Michael McAfee, President and CEO of PolicyLink, and Ms. JoAnne Bland, civil rights activist and footsoldier from Selma, Alabama. Further participants were able to attend conference sessions developed and delivered by Choice Grantees and other panel experts focused on improving neighborhood, housing and people results.





hous • *ing*

WEST LOUISVILLE HOUSING FAIR

SATURDAY, DECEMBER 10, 11AM – 1:30PM

SHAWNEE SATELLITE OFFICE, 4018 W. MARKET ST.

## Economic Mobility & Housing Stability

Urban Strategies, Inc. partnered with the Louisville Metro Center for Equity, and WE Lou, Inc. to host the **West Louisville Housing Fair**. This event connected West Louisville residents to resources focused on housing stability, and economic mobility. Special Guest: Urban League, LMHA, Local Realtors, Louisville Metro Downpayment Assistance, Legal Aid Society, New York Life Insurance, Republic Bank, and Park Community Credit Union.



USI | URBAN STRATEGIES, INC.

Families at the Center of Results



## My First Teacher Pilot Program Launch

Urban Strategies, Inc. partnered with Play Cousins Collective to host the **My First Teacher Luncheon**. This event was designed to connect Beecher Terrace families with programs offered by Play Cousins Collective, and to begin conversation with families about their barriers around quality childcare.



USI | URBAN STRATEGIES, INC.

*Families at the Center of Results*



USI | URBAN STRATEGIES, INC.

*Families at the Center of Results*

**980 W Liberty St  
Louisville, KY 40203**



USILouisville



@USILouisville

# Implementation Grant – People Update

## LMHA Special Programs

- *Family Self Sufficiency Update*
  - 20 original Beecher Terrace residents currently participating in LMHA's FSS program (69 residents served since grant award)
  - 20 original Beecher Terrace residents have graduated from the program and received a total of \$135,827 in escrow)
  - 4 have purchased homes







# BT Recreational Amenities

- Baxter Community Center



**COMING SOON... a NEW and IMPROVED  
Baxter Community Center**

**BT BEECHER  
TERRACE**

**VISION:RUSSELL**

*A Roadmap for the Future*

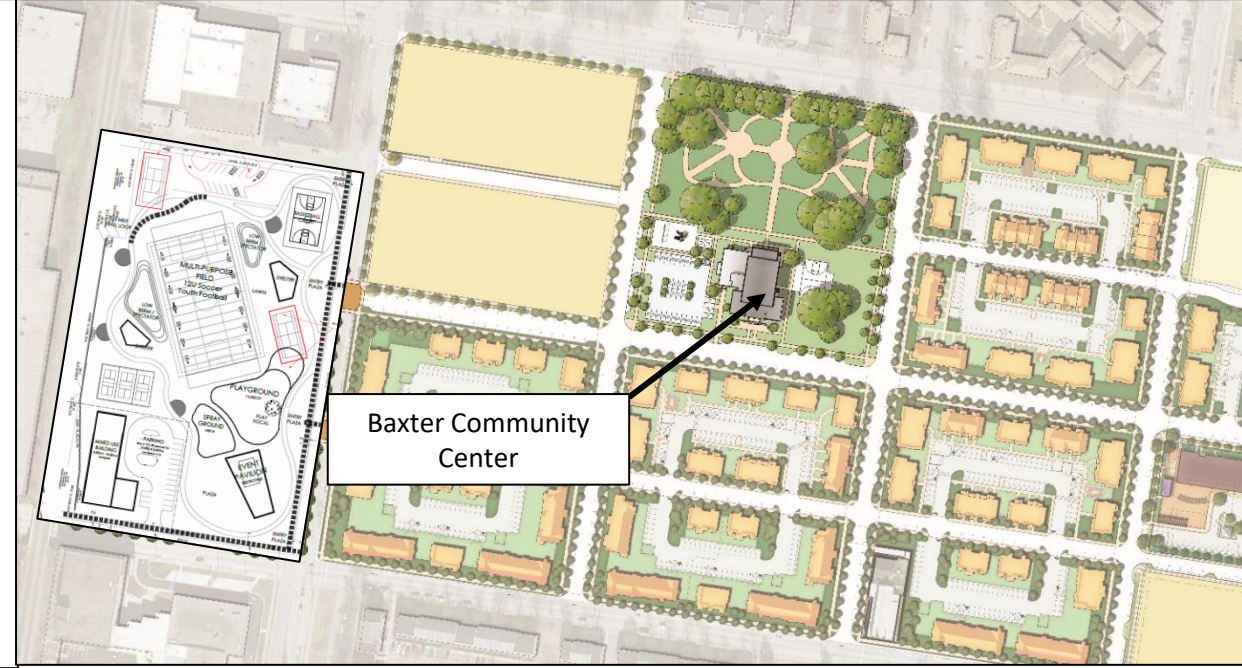


**THE BEECH**

INC.  
Education Is Key to a Hopeful Future.



**LOUISVILLE  
PARKS  
AND RECREATION**

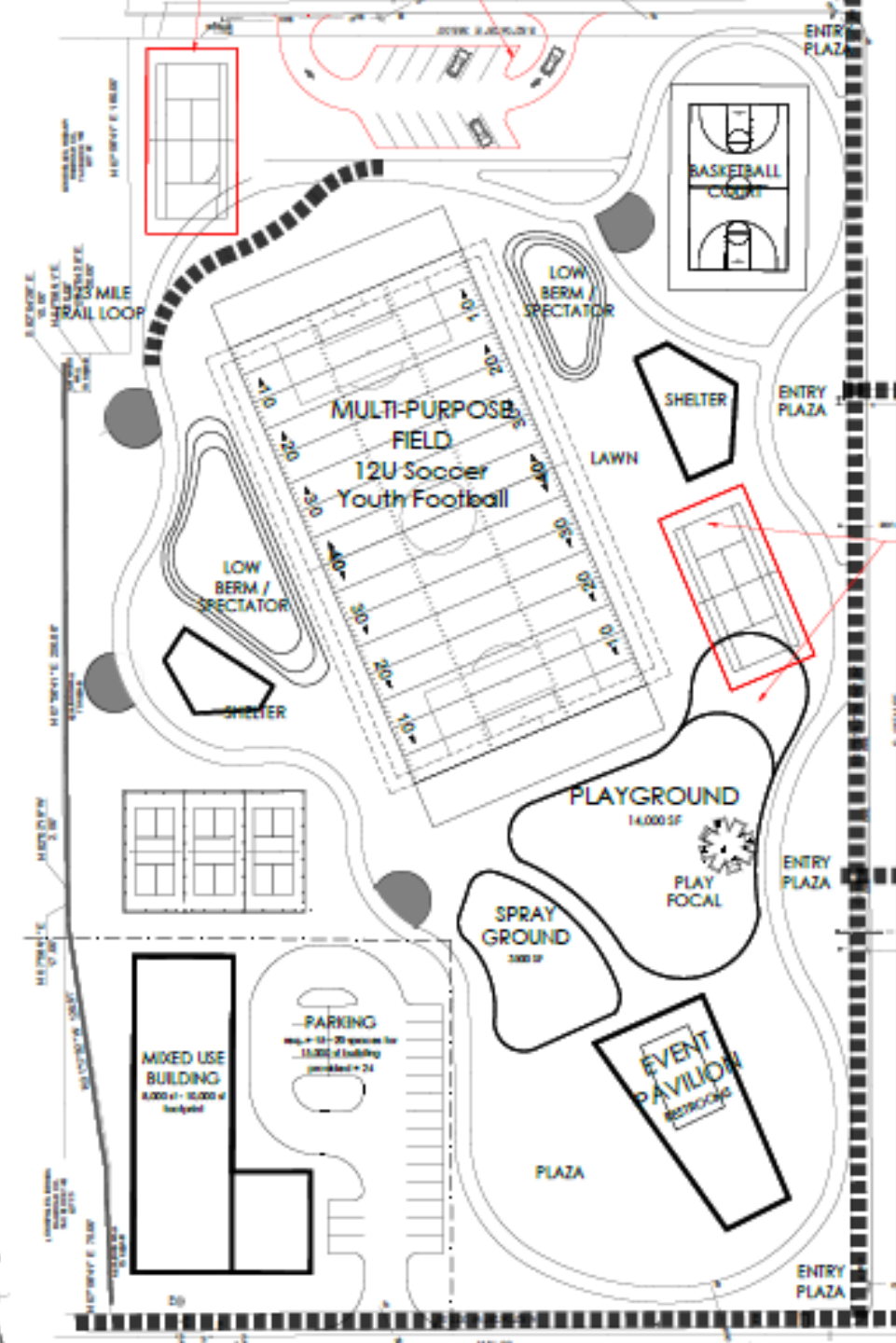
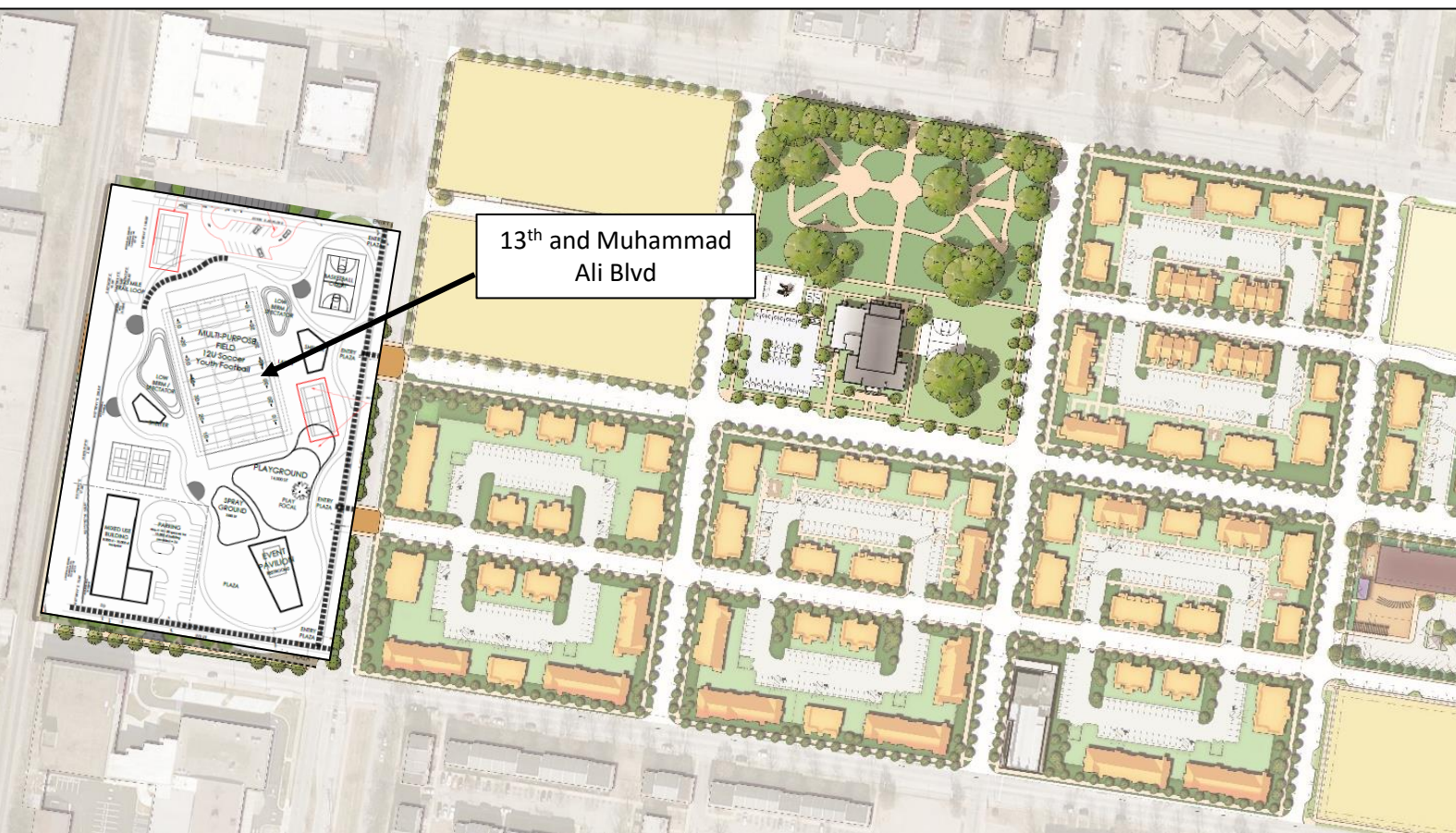






# BT Recreational Amenities

- Park at 13<sup>th</sup> and Muhammad Ali Blvd.







MCCORMACK  
BARON  
SALAZAR

# On-Site Housing Update



BEECHER TERRACE SITE PLAN — PHASING

Phase I Phase II Phase III Phase IV





MCCORMACK  
BARON  
SALAZAR

## On-Site Housing



Phase I



Phase II



Phase III





# Off-Site Housing

For more information visit

<https://visionrussell.org/original-beecher-residents-3>



**Crossings at Mill Creek**  
(leasing in May 2023) &  
**Lower Hunter's Trace**  
(Leasing in Feb. 2023)



**Zion Manor II**  
(Now Leasing)



**Donerail Run**  
(Now Leasing)





# Next Coordinating Committee Meeting

- *May 17, 2023, 10 a.m.*





[www.visionrussell.com](http://www.visionrussell.com)