



March 2023

Beecher Terrace Recreational Amenities

Louisville, Kentucky

Baxter Community Center — Eye Level Entry



Baxter Community Center — Eye Level West



Baxter Community Center — Eye Level Rear



Baxter Community Center — Entry Detail



Baxter Community Center — Front Façade



Baxter Community Center — Front Elevation



Baxter Community Center — Rear Elevation



Baxter Community Center — East Elevation



Baxter Community Center — West Elevation



Baxter Community Center — Aerial Front



Baxter Community Center — Aerial West



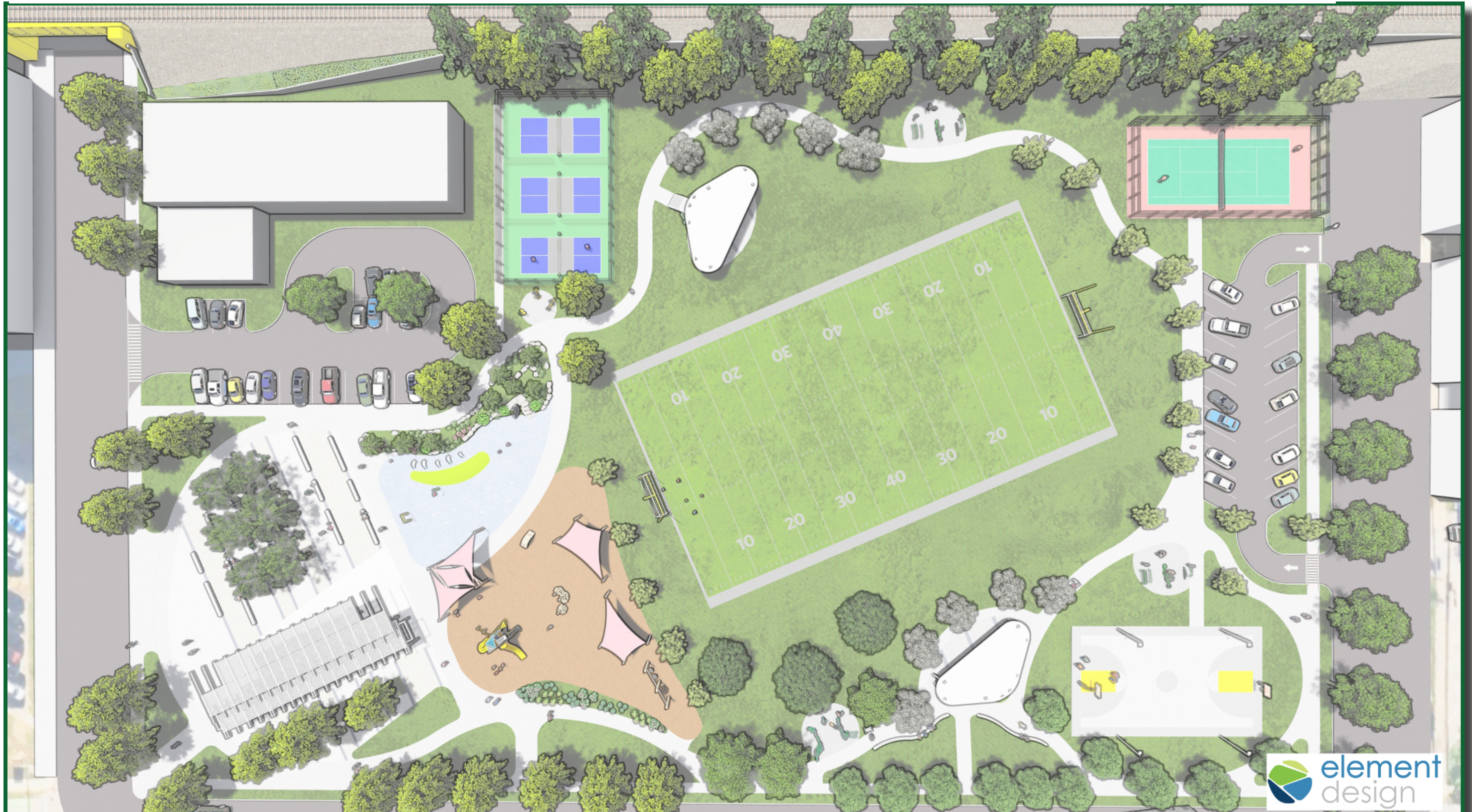
Baxter Community Center — Lounge & Gymnasium Space



Planned Improvements — Park at 13th & Muhammad Ali Blvd.



Planned Improvements — Park at 13th & Muhammad Ali Blvd.



Planned Improvements — Park at 13th & Muhammad Ali Blvd.



Baxter Community Center

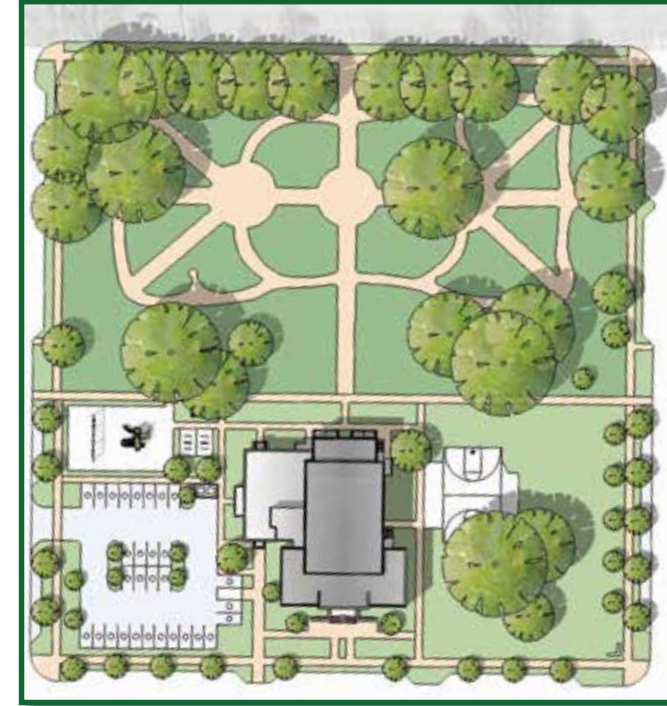
Estimated Cost:

\$11,615,000

Park - Phase I

Estimated Cost:

\$3,935,000



New Park on Former Porter Paints Site

- **Phase I** - Park, Pavillion, and Plaza
 - LMG project lead
 - LMG working with Element Design on plan refinements/construction documents
 - LMG will issue RFP for Phase I that reflects LMHA's procurement policy including MBE/WBE/DBE and Section 3 goals
 - Anticipated start date - Summer 2023



Expanded and Renovated Baxter Community Center

- SCB's team for the Baxter Community Center contract includes **three MBE firms** - **CL Anderson Architecture, LLC**. (architectural services), **HDDS** (design services), and **Tri-Eco, LLC** (environmental services), and two WBE firms - **Hagerty Engineering** (geotechnical services) and **Civil Design, Inc.** (civil engineering).



Construction Timeline

Begin construction

- New Park (Phase I) – Summer 2023
- Baxter Community Center – Winter 2022

Grand Openings

- New Park (Phase I) – Summer 2024
- Baxter Community Center – Summer 2024

